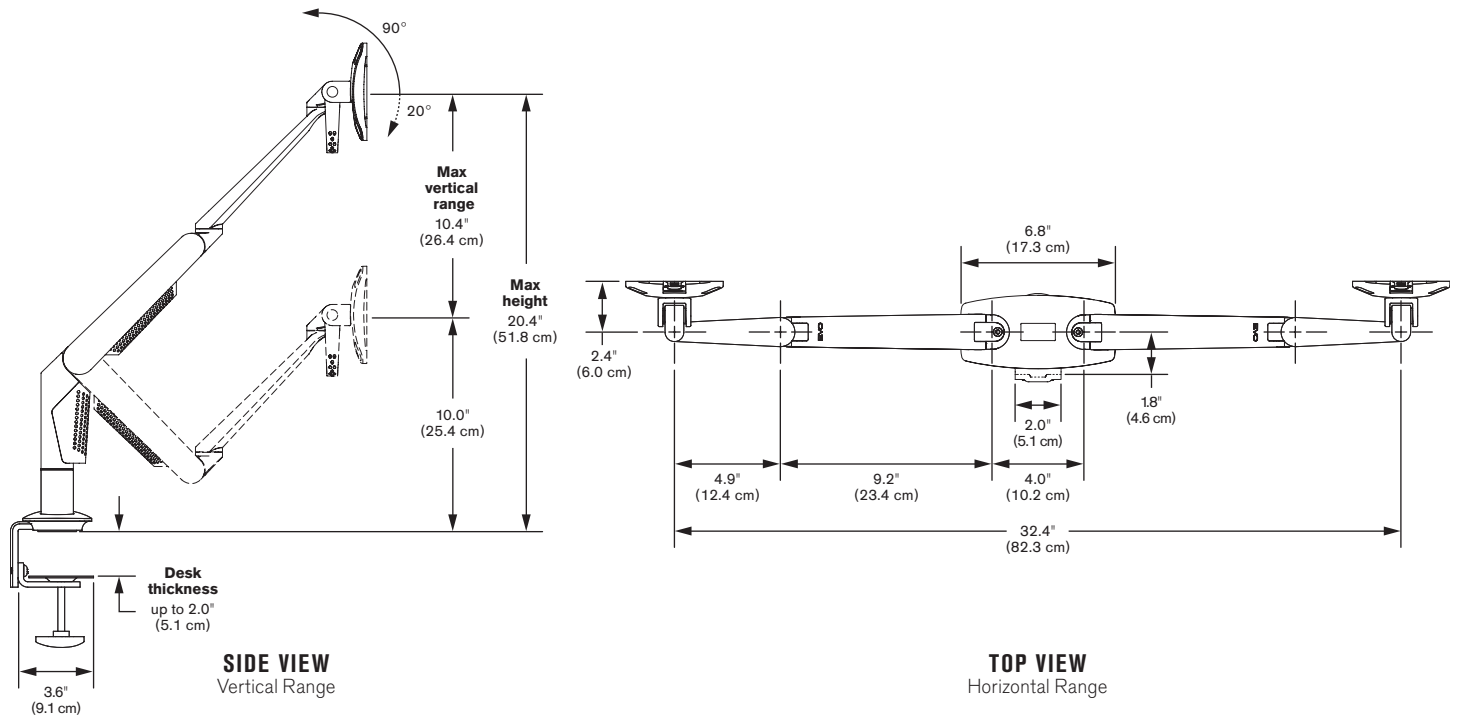


Dual EVO[®] Mount

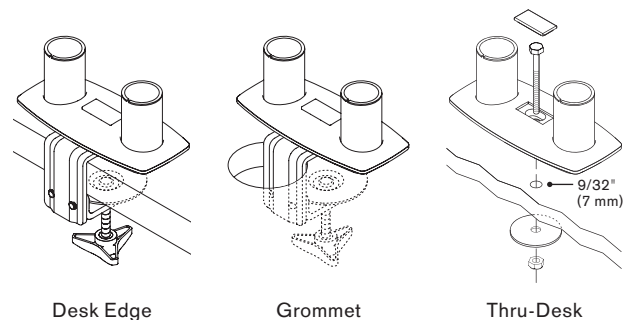
Specifications



ARM CAPABILITIES

- Vertical range**..... +/- 5.2" (13.2 cm) from horizontal
- Horizontal range, per arm**..... 18.6" (47.2 cm)
- Rotation**..... 360° at two joints, 180° at base
- Monitor tilt**..... 90° up, 20° down from center
- Monitor pivot**..... Landscape to portrait
- Monitor compatibility**..... VESA[®] 75mm and 100mm
- Cable management**..... Cables are clipped beneath arm
- Mounting options**..... Desk Edge, Grommet, Thru-Desk
- Monitor weight** (at standard monitor depths)..... 7 - 20 lbs (3.2 - 9.0 kg) per monitor

MOUNT CONFIGURATIONS



available at:



800.531.3746

info@thehumansolution.com
thehumansolution.com

