

Sapper Monitor Arm Collection



Knoll

The Standard for Technology Support

Richard Sapper conceived the Sapper™ Monitor Arm Collection to set a new standard for intuitive functionality, ease of reconfiguration and unobtrusive visual elegance. Renowned for his forward thinking workplace and technology products, Sapper has engineered the most straightforward and refined monitor arm collection available today. Recently selected for The Museum of Modern Art (MoMA) Architecture and Design Collection in New York City, the Sapper Monitor arm achieves unsurpassed simplicity and adaptability.



Structural Simplicity

The two principal structural components of the system, the mast and monitor arm, punctuated by the signature red adjustment knob, facilitate openness and movement while optimizing ergonomic support. A range of interchangeable mast heights and single, double or triple monitor support solutions on a single mast offer maximum planning flexibility.

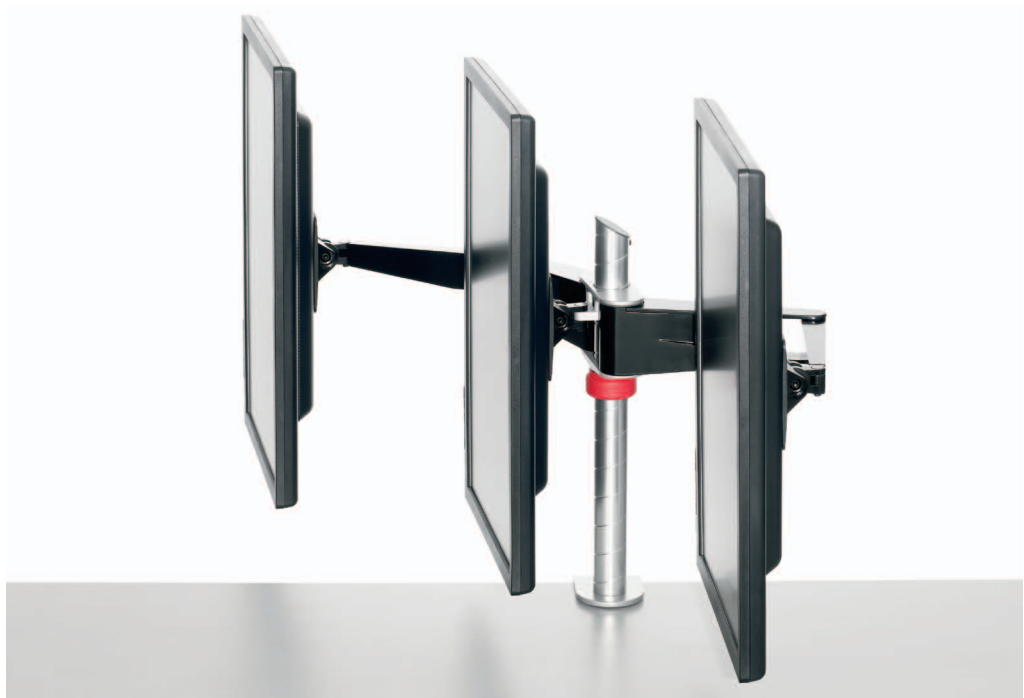
Uniquely engineered to fold into itself, the Sapper monitor arm allows individuals to maximize desk space by compressing the arm to 27/8" deep. Double monitor arm, left, in Bright White; single monitor arm, right in Medium Grey, on an Antenna™ Workspaces big table with Antenna side beam mounts.





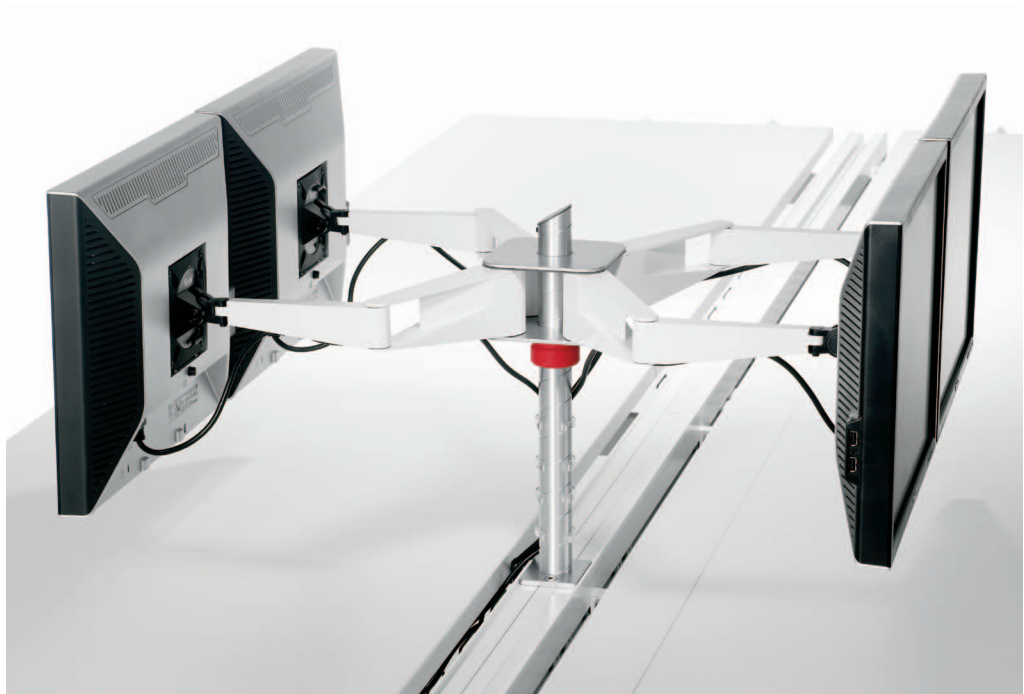
A Comprehensive System

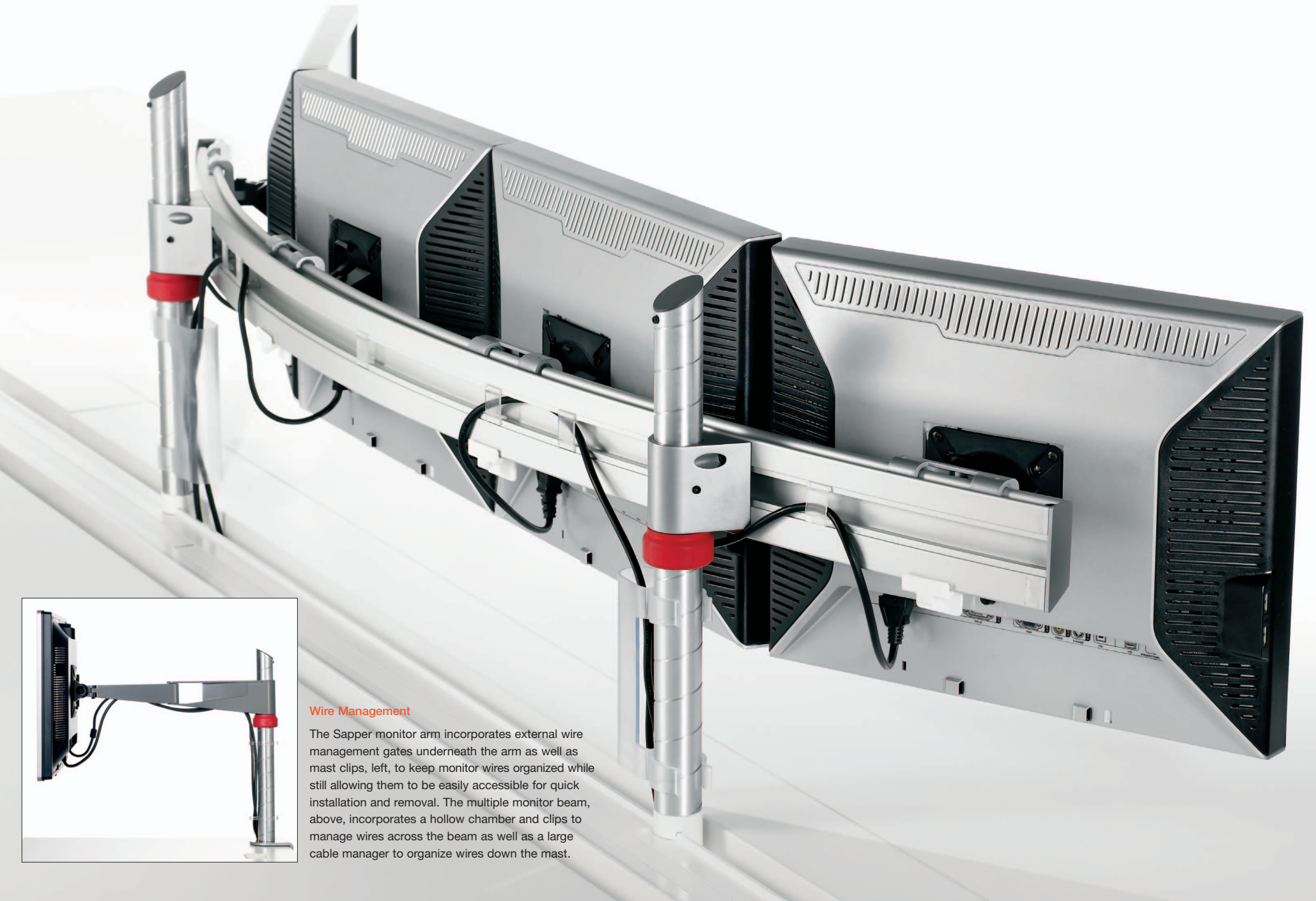
The Sapper Monitor Arm Collection is a highly flexible and reconfigurable system, with numerous options that adapt to the environment at hand. With the ability to mount multiple monitor arms in a variety of configurations, the Collection can evolve with an organization's changing needs.



Multiple Monitor Solutions

The Sapper Monitor Arm Collection takes technology support beyond a solution-based approach to that of highly functional architectural expression. Three monitors supported by a single mast with a triple monitor support in Jet Black, above right. A quadruple monitor arm, right, in Bright White, is a streamlined approach to back-to-back double monitor support in open table applications or as computer touchdown stations. Multiple monitor beams, opposite, on Antenna Workspaces side beam mounts with eight monitors, are contoured to maximize usable worksurface while creating a cockpit effect for visual comfort.



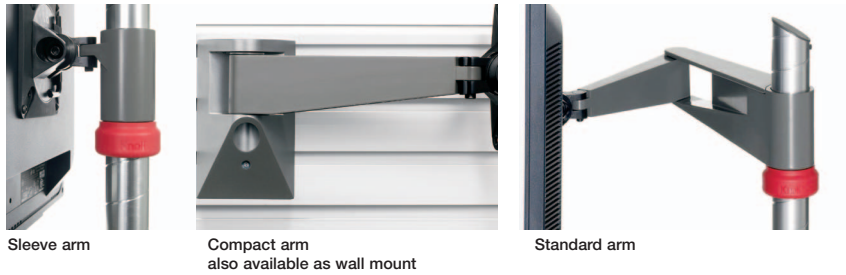


Wire Management

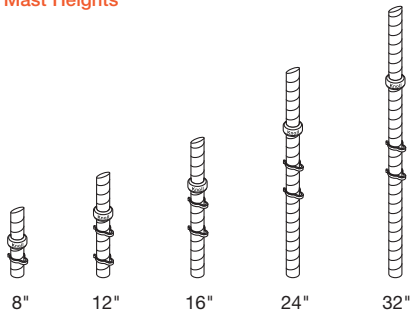
The Sapper monitor arm incorporates external wire management gates underneath the arm as well as mast clips, left, to keep monitor wires organized while still allowing them to be easily accessible for quick installation and removal. The multiple monitor beam, above, incorporates a hollow chamber and clips to manage wires across the beam as well as a large cable manager to organize wires down the mast.

A Flexible Kit of Parts for a Range of Applications

Arm Options



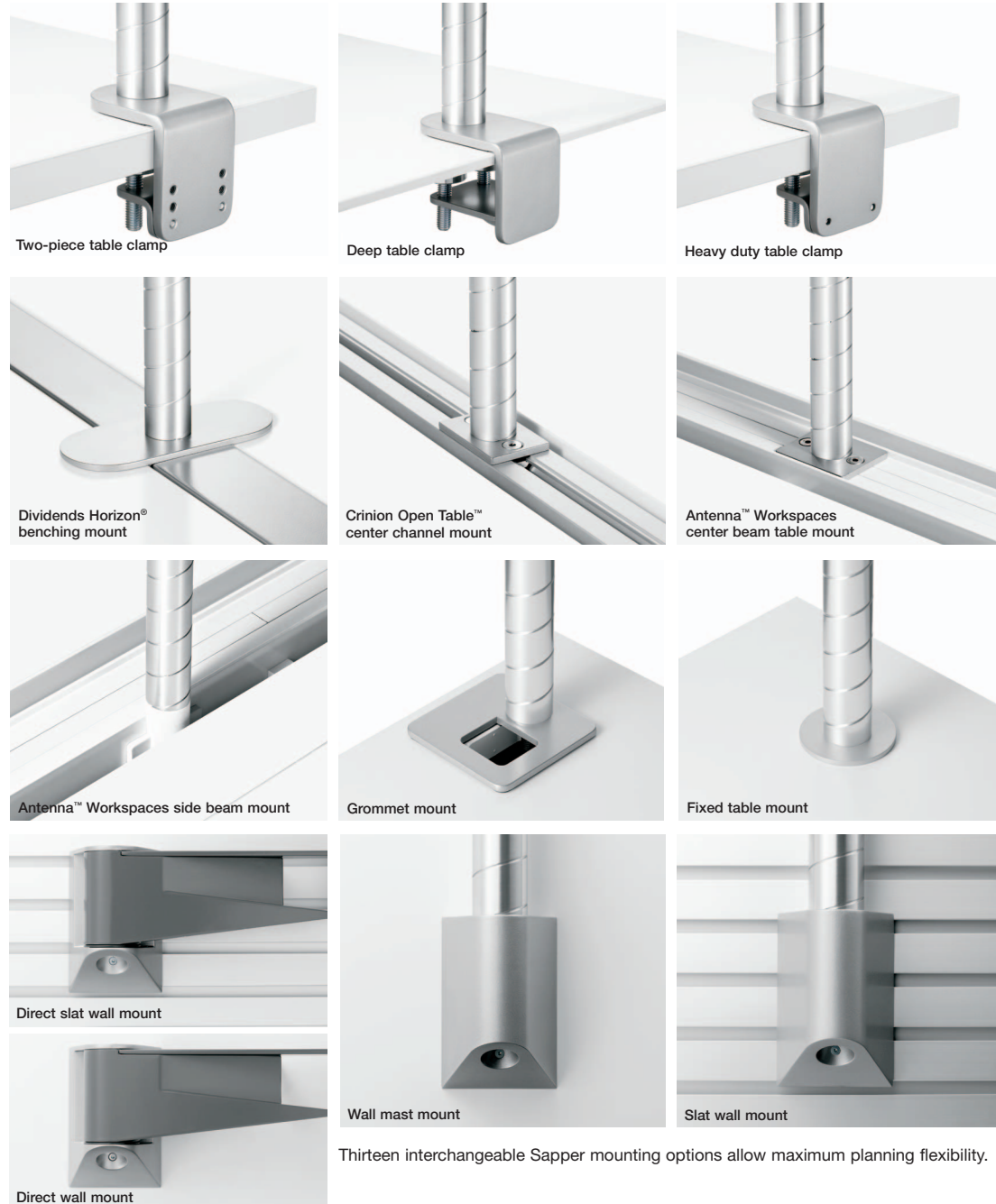
Mast Heights



Arm Colors

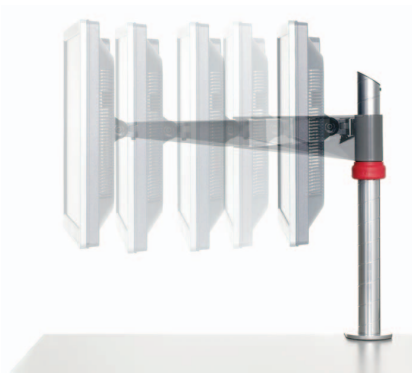


Mounting Options

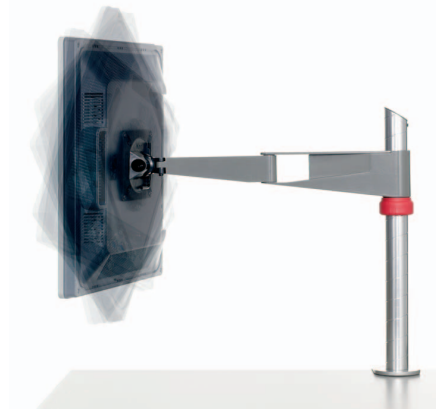


Sapper™ Monitor Arm Collection

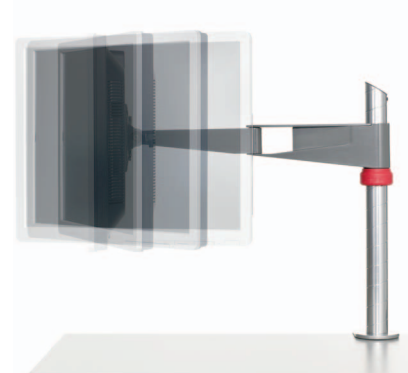
Iconic designer Richard Sapper has created a fresh, ergonomic approach to simplify technology support at an affordable price. With four finishes, thirteen mounting options, five mast heights and the ability to mount single, double and triple monitors on one mast, and up to eight monitors on multiple monitor beams, the Sapper Monitor Arm Collection is a comprehensive system adaptable to any organization's needs. Constructed from 95% recyclable material, the Collection is GREENGUARD® Indoor Air Quality certified and can contribute to achieving LEED® points.



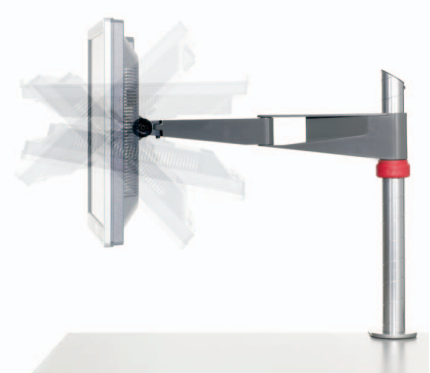
Offers approximately 17" of depth adjustment, depending on mounting option and screen thickness. The arm virtually disappears when folded back into itself, compressing to a mere 2⁷/₈".



Provides 360 degrees of rotation from portrait to landscape.



Swivels 180 degrees back and forth to easily share information on the screen.



Tilts up and down 165 degrees to reduce glare and provide continual support when an individual moves from sitting to standing.

available at:



800.531.3746

info@thehumansolution.com

thehumansolution.com