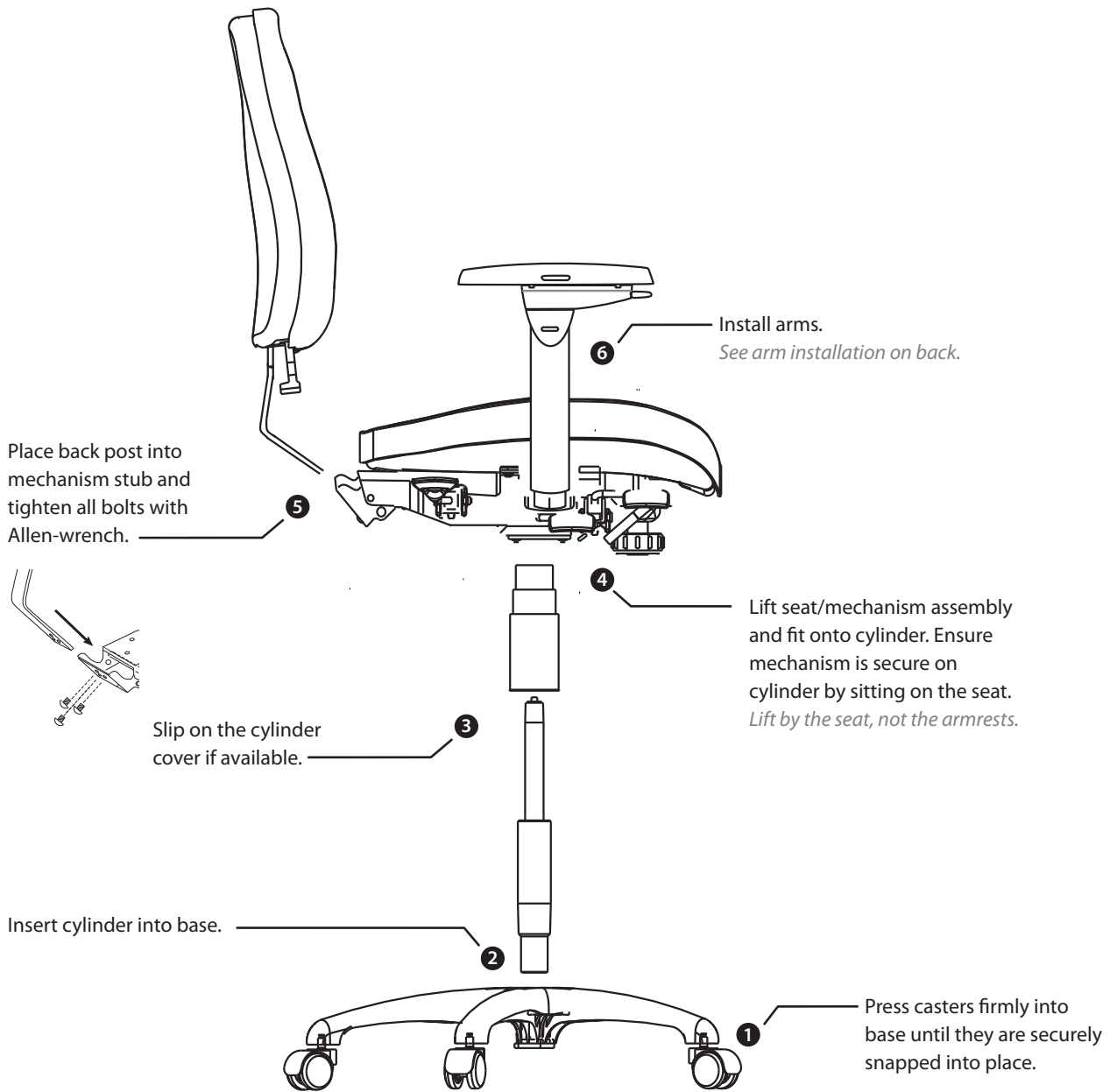


Neutral Posture® Seating

Tools 3/16" Allen wrench (provided)

People 1 Person

Time 5 - 10 minutes



NP 360° Arm

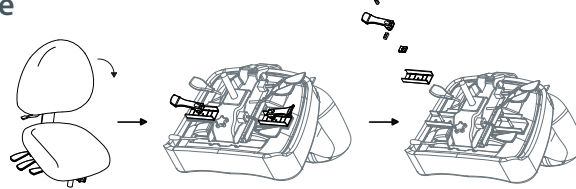
Tools Allen wrench (*included*) or 10mm Socket

People 1 Person

Time 8 - 10 minutes

Preparation Guide

Turn chair upside down on work surface for access to the arm brackets.



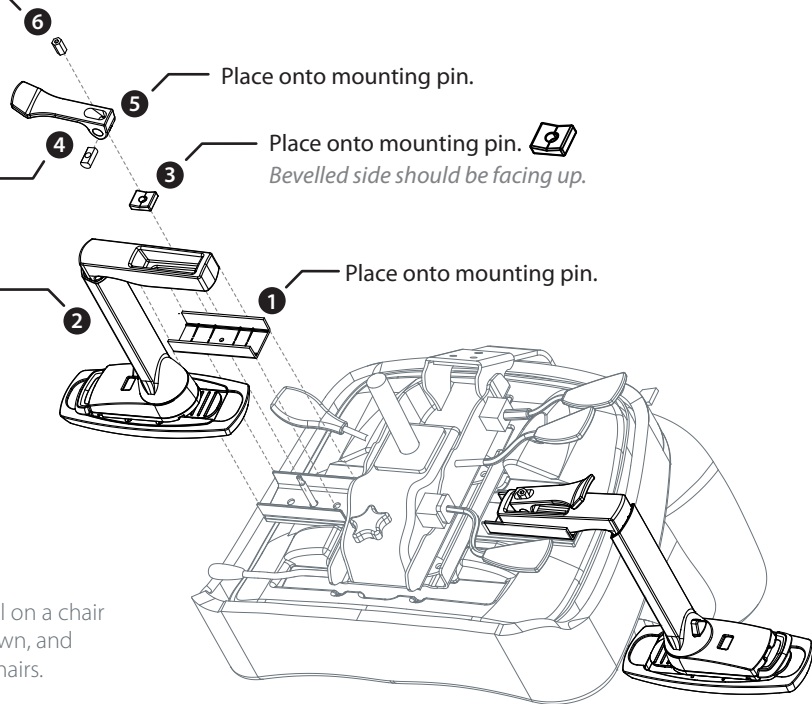
Remove the lever release hardware using the allen wrench or 10mm socket. **Do not remove tape that secures the hardware together, until after final step of installation.**

Installation Guide

- Slightly tighten nut. Lift lever and continue to tighten until proper tension is reached. *Proper tension allows arms to lock into position and adjust freely when unlocked.*

- Place inside the lever. *Flat surface should be facing up.*

Align the arm onto plastic guide tray. *Button should be facing towards backrest.*



The new NP 5-way arms will only install on a chair mechanism with the arm brackets shown, and will not retrofit older Neutral Posture chairs.

H5 Headrest

Tools Phillips Screw Driver

People 1 Person

Time 5 - 10 minutes

Place screws in the spaces under the bottom lip and combine w/ upper section.

Tighten screws using Phillips Screw Driver until headrest is secured on the back of the chair.

