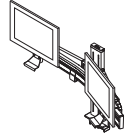


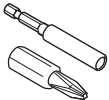
# eyesite™ dual monitor support

Installation Instructions 19716201 Rev A

FPAC2CC	FPAEC2CC
FPAC2TM	FPAEC2TM
FPAC2CS	FPAEC2CS



Tools required:



#2 Phillips Screwdriver



Power Drill



3/8" Drill Bit

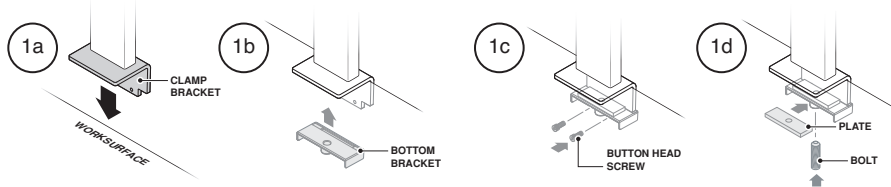


5/32" Allen Wrench  
Provided

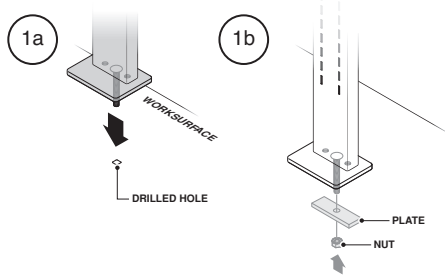


5/16" Box End Wrench

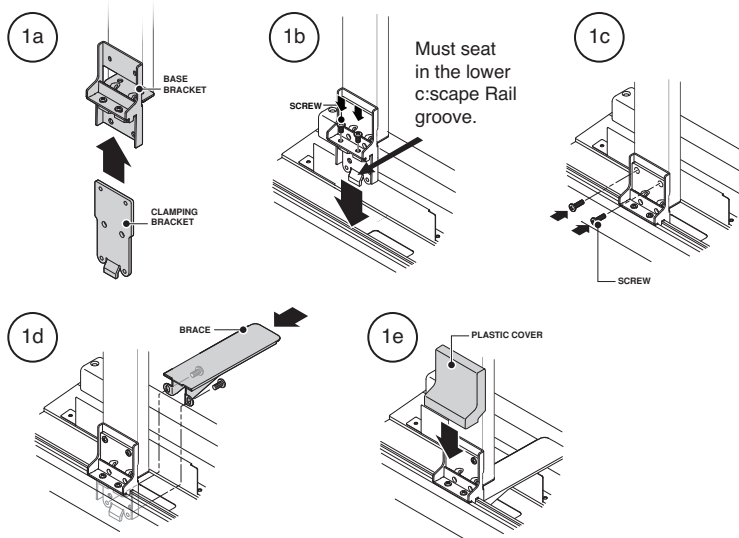
## C-clamp Mount Installation



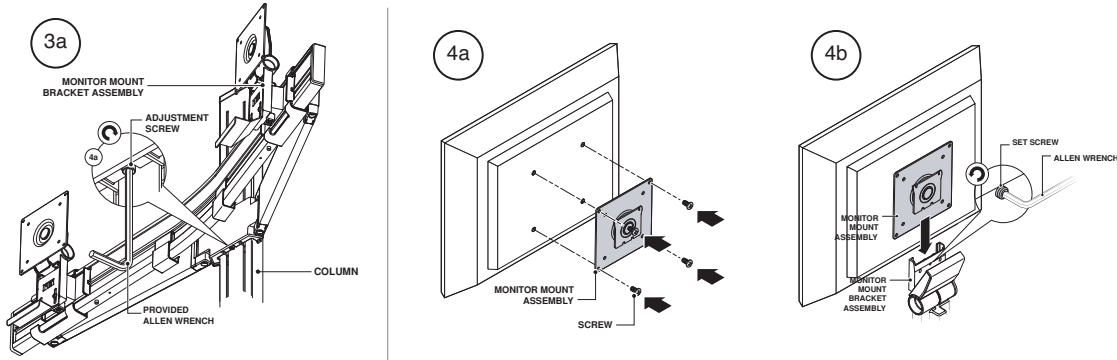
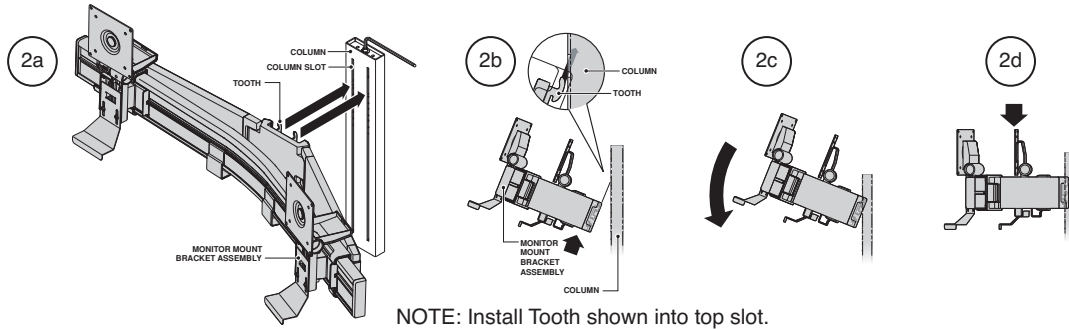
## Through Mount Installation - Drill 3/8" 24 - 30" from front of worksurface edge



## c:scape™ Mount Installation

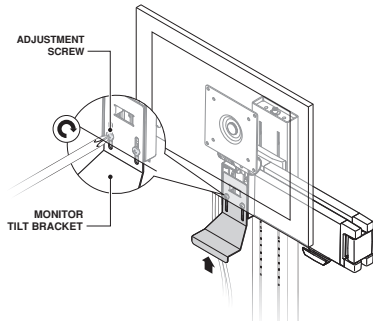


### Installation Instructions:

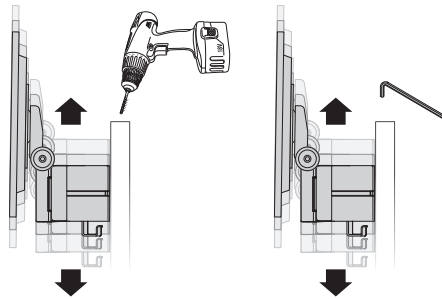


NOTE: Secure Yolk to the Column.

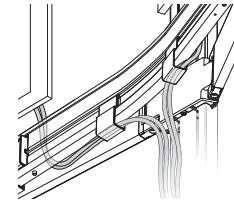
#### Adjust Handle



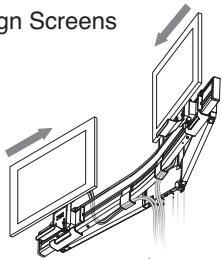
#### Adjust height with Drill or Allen Wrench



#### Route Cables



#### Align Screens



Recommendation: Adjust the height of the Flat Panel Monitor Support so that the center of VESA bracket is 46" above the floor.

available at:



800.531.3746

info@thehumansolution.com

thehumansolution.com

©2009 Steelcase Inc. All rights reserved. 11/09