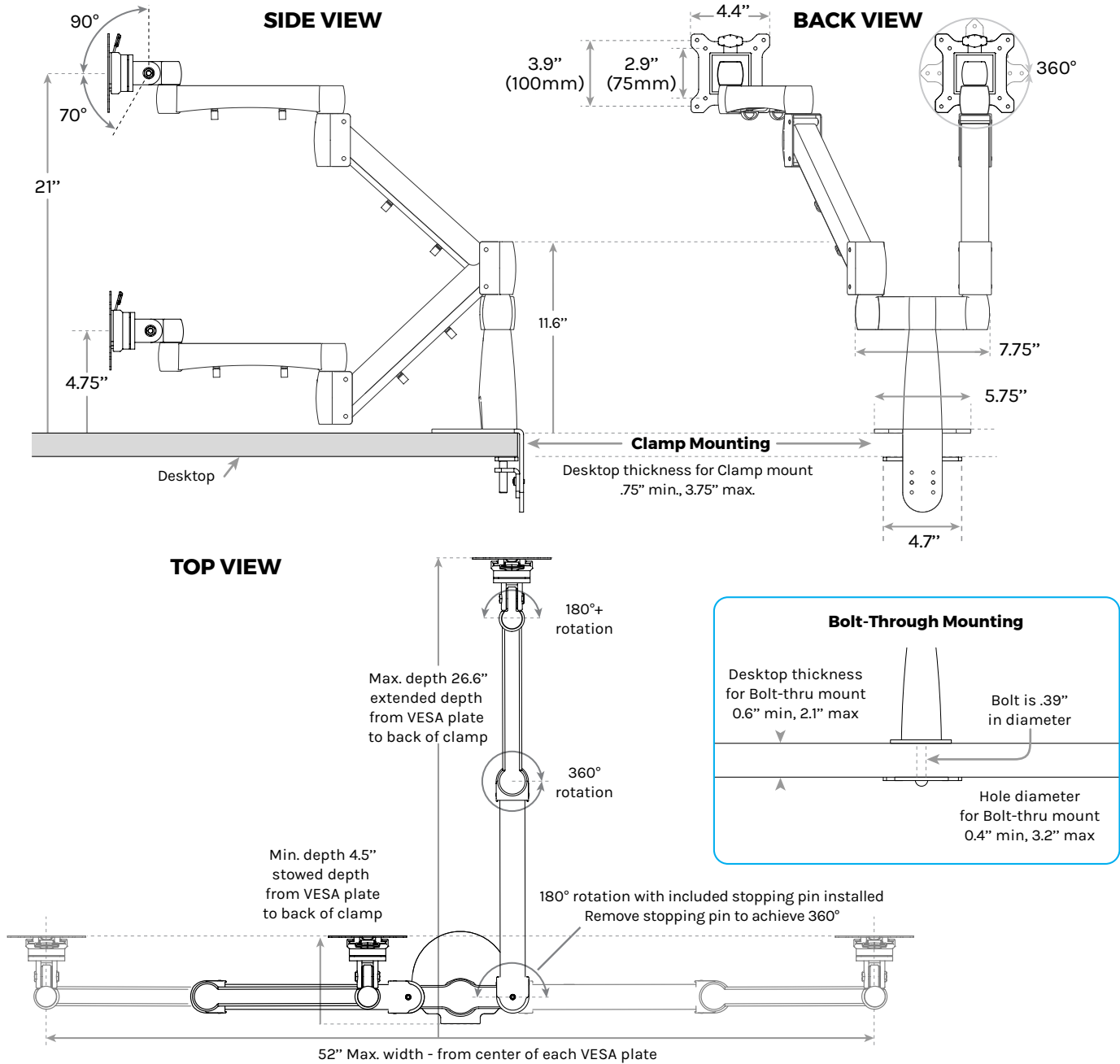


Range Dual Monitor Arm

SKU: MON021

Specifications



Colors	Black, Gray, White
Monitor Weight Range	4.5 - 17.5 lb (each monitor)
Mounting Type	Clamp or Bolt-Through Mount
Unit Weight	20.5 lb (if clamped to desk) 17.9 lb (if bolted through desk)
VESA Plate	75mm x 75mm & 100mm x 100mm quick release
Warranty	15 year



For help with assembly, find our assembly instructions at <https://bit.ly/2LAQUea>

For technical questions and support call 800-349-3839, email info@upliftdesk.com, or visit our chat service at upliftdesk.com