

specifications

Overall Dimensions

26" x 25" x 35.5-39"
(W x D x H)

Seat

20" x 19" (W x D)

Back

19" x 18.3" (W x H)

Seat Height

17" (at lowest point)
20.5" (at highest point)

Weight

38 lbs

Cube

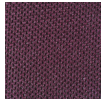
44

standard colors

black mesh
F241



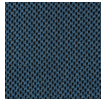
burgundy mesh
F243



grey mesh
F242



navy mesh
F249



mesh

MT5241

\$264



features

Tilt Tension Control

Recline rate adapts to weight of user.

Center-Tilt

Chair tilts from a point under the center of the seat allowing user to rock back and forth. Tension adjustable.

Tilt Lock

Locks out tilt function.

Seat Height Adjustment

Sets seat height to desired position relative to floor.

Width Adjustable Arms

Adjusts arms in or out for proper ergonomic positioning.

Arm Height Adjustment

Adjusts arm up or down for proper ergonomic positioning while seated.

Upholstered Back

eurotech
a raynor group company

 **humansolution**[®]

800.531.3746 • info@thehumansolution.com • thehumansolution.com