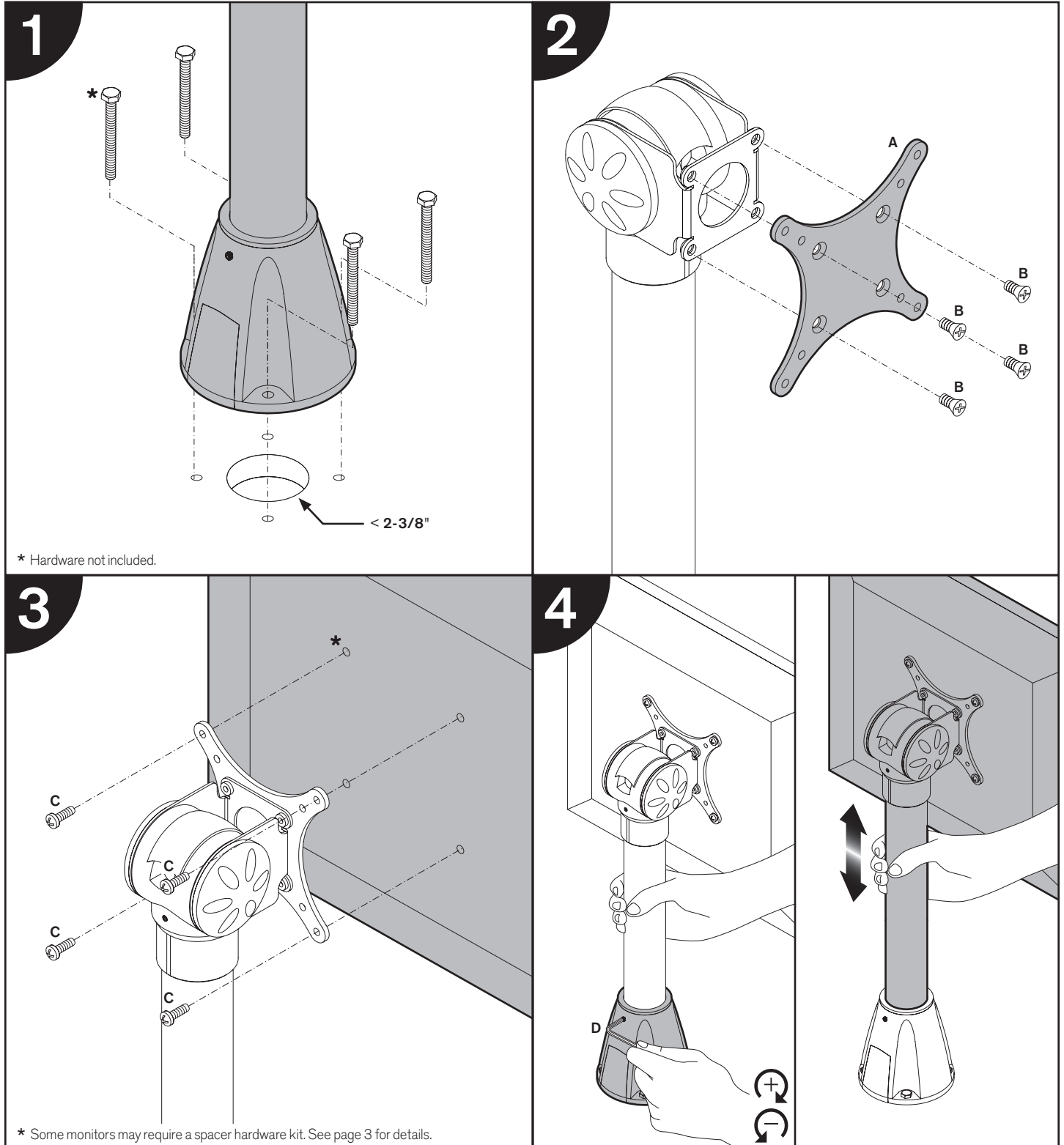
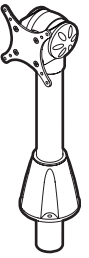
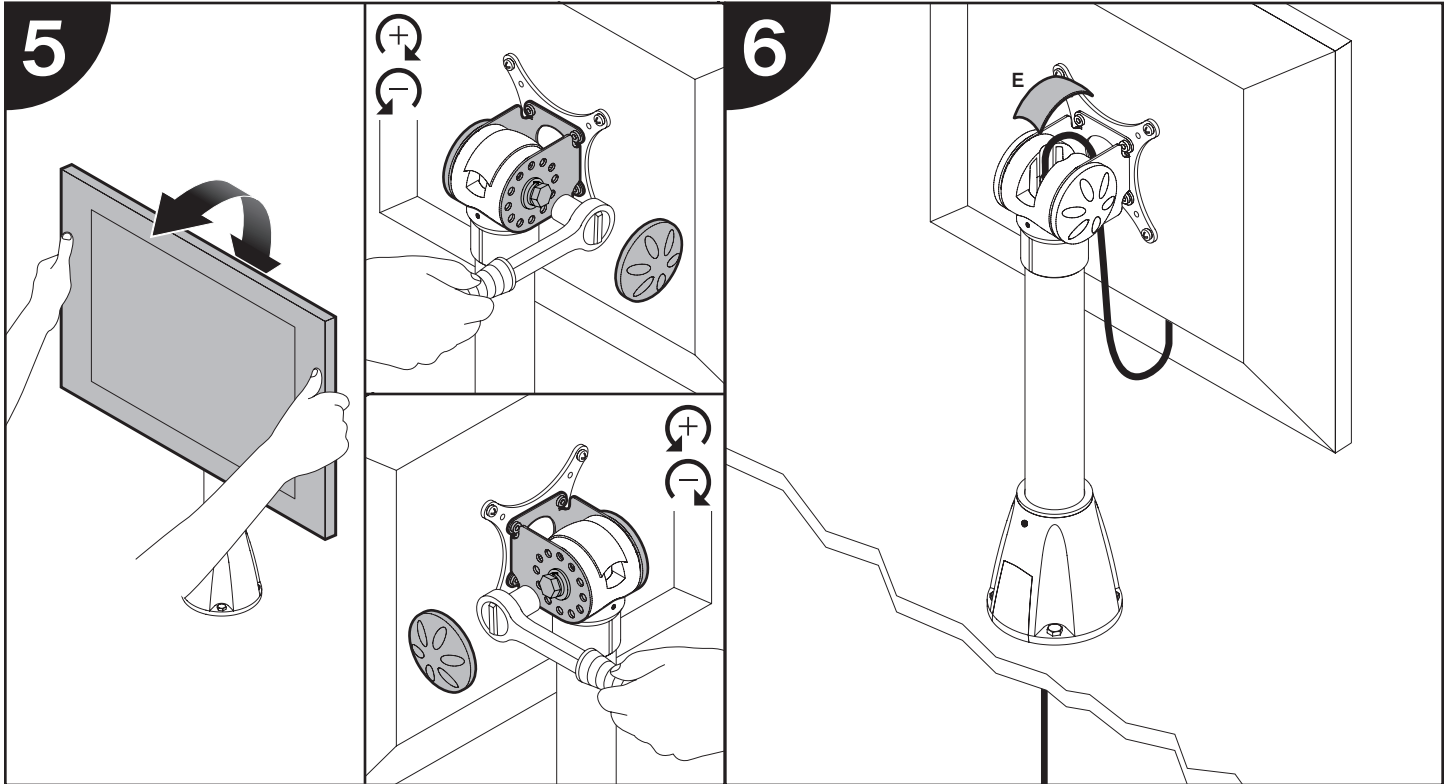
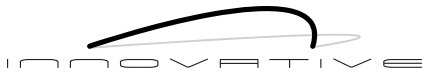


MODEL 9189

Installation Instructions



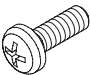




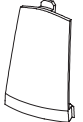




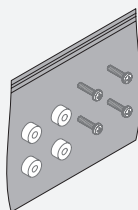
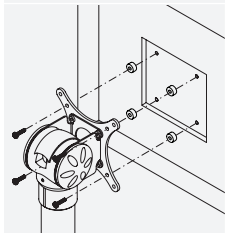
MODEL 9189

Parts List

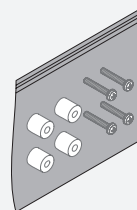
| ITEM | DESCRIPTION / PART NO. | QUANTITY |
|------|--|---------------|
| A |  75/100mm VESA® Adapter Plate 105587 | 1 |
| B |  10-32 x 3/8" Phillips Flat Head Screw 702281 | 1 (4-pack) |
| C |  M4 x 12mm Phillips Pan Head Screw 702096 | 1 (4-pack) |

| ITEM | DESCRIPTION / PART NO. | QUANTITY |
|------|--|----------|
| D |  3/32" Allen Wrench 700146 | 1 |
| E |  Tilter Cable Cover 105134 | 1 |
| F |  Base Cable Cover 105134 | 1 |

OPTIONAL SPACER KITS In some cases, the mounting surface on your monitor may be recessed further than permitted by VESA® standards. As a result, a spacer kit may be required.



.25" Spacer Hardware Kit
(4) .25" Spacers
(4) M4 x 18mm Phillips Pan Head Screws
Order # P404923-B



.5" Spacer Hardware Kit
(4) .5" Spacers
(4) M4 x 25mm Phillips Pan Head Screws
Order # P404923-C

available at:



800.531.3746
info@thehumansolution.com
thehumansolution.com