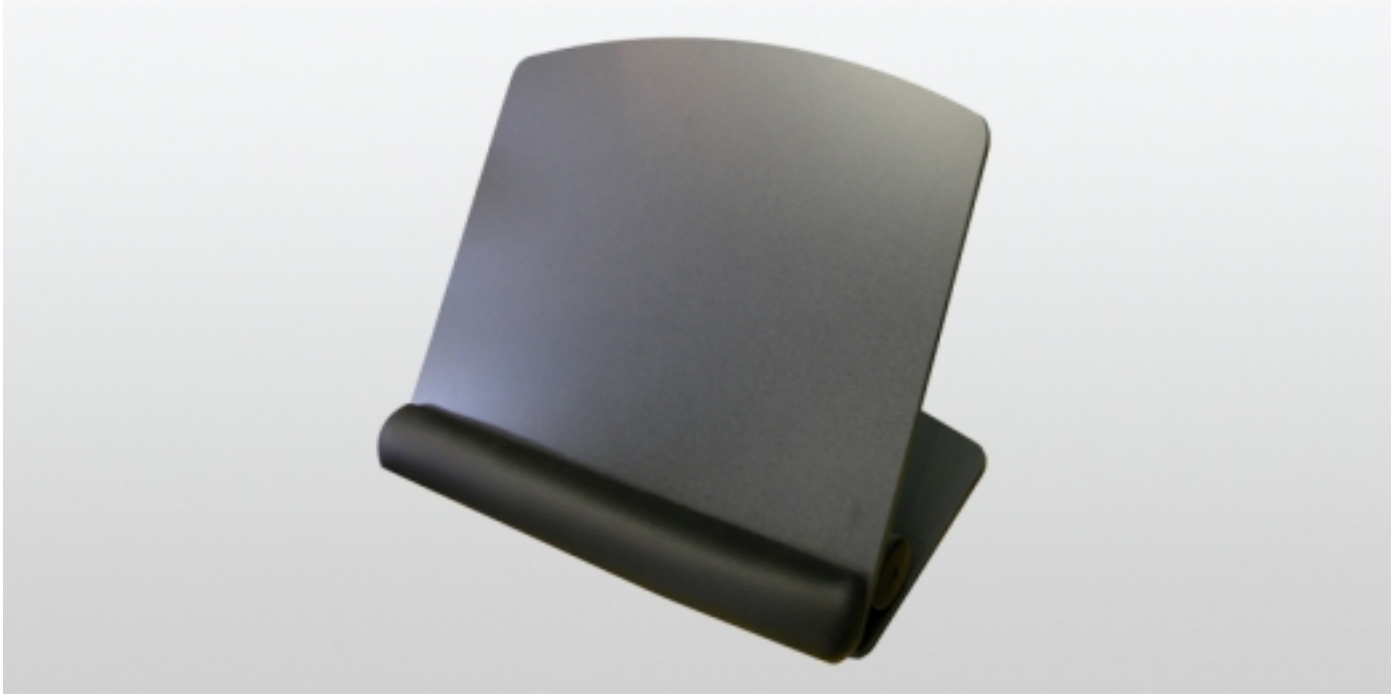


## Ergonomic Accessories - Copy Holders Writing Tablets



### Writing Tablets

Writing tablets are an essential ergonomic tool for office workers. The angle adjustable pad provides a palm rest for support while writing.



### Features and Specifications

- 2" deep palm pad
- Slotted base for angle adjustment (60-degree tilt)
- Available in steel or melamine
- Available in 2 sizes

available at:

 **humansolution**<sup>®</sup>

800.531.3746  
info@thehumansolution.com  
thehumansolution.com