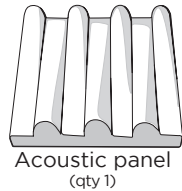


# 3D Tube Acoustic Wall Panel

ACC027/ACU027

UPLIFTACOUSTICS®

## Package Contents



Nails



Velcro® strips



3M Command™ Strips

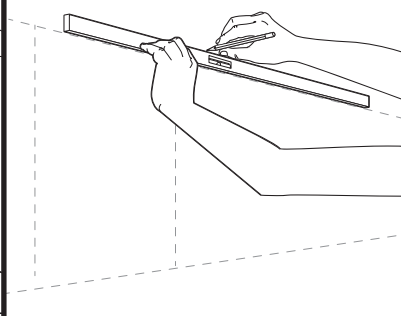
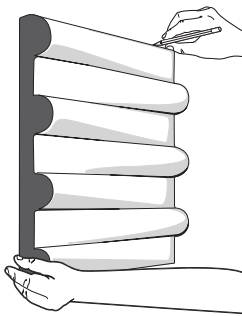


Hot Glue Gun  
(and glue sticks)

## Additional Items (must be purchased separately)

## Before you begin:

These instructions contain multiple installation options which require the purchase of additional materials not included in this kit. Please read the instructions before you start. Depending on the installation method you choose, you may need different items.

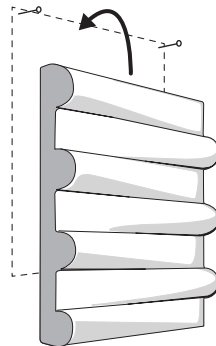
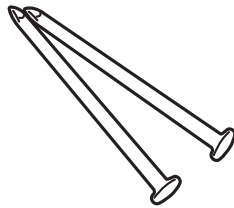


## Step 1

Choose a place on your wall where you want to hang your Acoustic panel. Mark the edges of the panel on the wall with a pencil to help with placement and to ensure the panel will be level when affixed to the wall.

If you are mounting several panels, take this time to measure your wall space to ensure all of the panels can fit in the space you have chosen. Drawing the entire grid in pencil may help you install the panels more accurately.

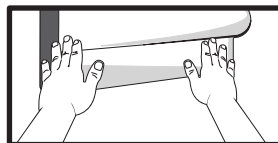
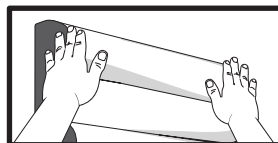
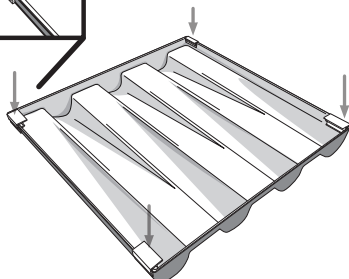
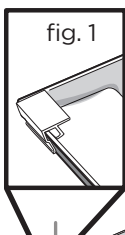
## Option 1: Nails



Using this method will allow you to place panels and remove them from the wall quickly.

Using your pencil marks as guides, insert two nails into the wall, spaced slightly less than the inside width of the panel. Insert each nail so that 1" sticks out past the wall. This will give you enough space to hang the panel on the nail.

## Option 2: Clips (visible)



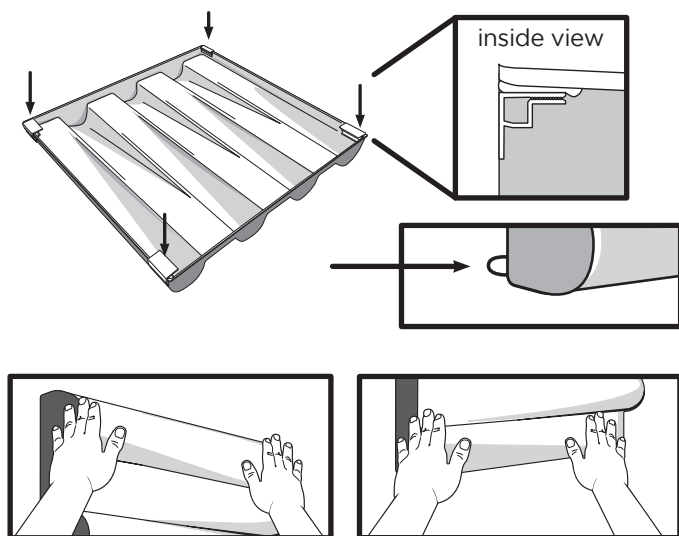
Take clips and fasten them to the panels near the corners, as shown in figure 1. Then, apply one of the following to each clip: either a line of hot glue, a Velcro® strip, or a 3M Command™ Strip (red side first). If using Velcro® or 3M Command™ Strips, peel off the other side of the adhesive before moving on.

Carefully align the panel into the space you've drawn in Step 1, and press firmly on all four corners for 30 seconds.

---

### Option 3: Clips (hidden)

---



If you want to hide the clips from view, use hot glue to affix the clips inside of the panel, as shown. Ensure that the flat part of the clip is flush with the edge of the panel. If the clip is glued too far inside, it will not make contact with the wall. After glue cools, apply one of the following to each clip: either a line of hot glue, a Velcro® strip, or a 3M Command™ Strip (red side first).

**Note:** If using 3M Command™ Strips, ensure the strip's tab protrudes slightly from the edge of the panel. You'll need to access the tabs if you want to easily remove these panels in the future.

Peel off the other side of the adhesive on the Velcro® or 3M Command™ Strip before moving on.

Carefully align the panel into the space you've drawn in Step 1, and press firmly on all four corners for 30 seconds.



4933053180251 - THS611



#### CAUTIONS & WARNINGS

**⚠ CAUTION:** Read all instructions before assembly. Failure to assemble or install properly can result in damage or personal injury.



**Copyright Notice:** This guide is a component of this accessory. This guide is a part of the scope of delivery, even if the item is resold. This guide is also available on the UPLIFT Desk website: [upliftdesk.com](http://upliftdesk.com). Excerpts or copies may not be forwarded to third parties or used in any other published form without the prior written consent of UPLIFT Desk. These instructions are subject to United States copyright law.