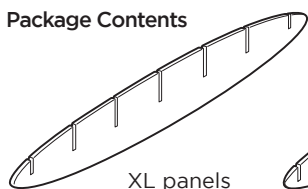


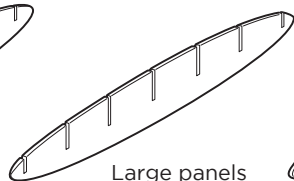
UPLIFT DESK[®]

3D Acoustic Ceiling Waffle Cloud, Large
ACC032

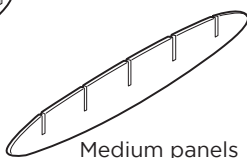
Package Contents



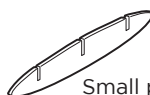
XL panels
(qty 2)



Large panels
(qty 4)



Medium panels
(qty 4)



Small panels
(qty 4)



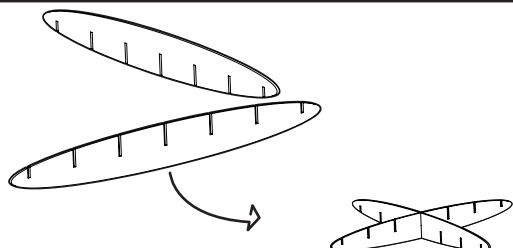
Screws

(qty 8)



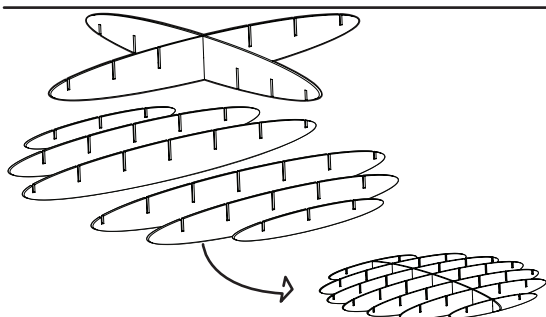
Wire assembly

(qty 4)



Step 1

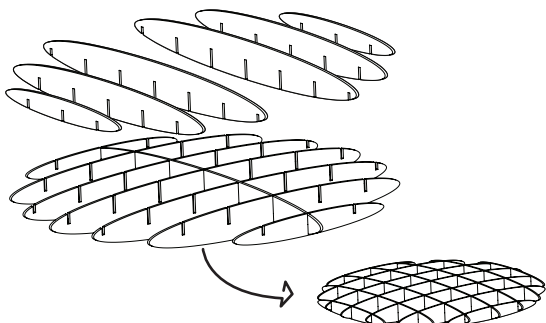
Take the two (2) XL panels (the longest panels) and connect them by sliding the middle slot of the upper panel into the middle slot on the lower panel, as shown. The bottom panel should have slots facing UP and the upper panel will have slots facing DOWN.



Step 2

Sort the remaining panels by size and separate them into two piles with two (2) Large, two (2) Medium, and two (2) Small panels. Half of the panels will be inserted with slots facing UP onto the corresponding slots on the XL panels.

Insert the Large panels on either side of the center XL panel, continuing next with the Medium panels, and finishing with the Small panels on the outside.

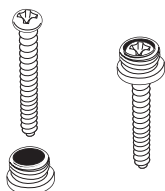
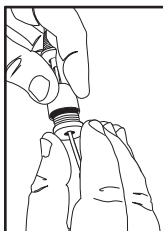


Step 3

After assembling the panels in Step 2, repeat the process again with the remaining panels, this time with the slots facing DOWN. Each should fit into a corresponding slot, as shown.

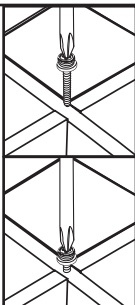
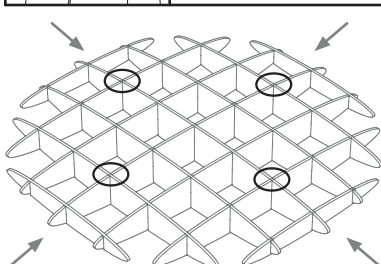
Insert the Large panels on either side of the center XL panel, continuing next with the Medium panels, and finishing with the Small panels on the outside.

Once all panels are assembled the unit should look like a waffle.



Step 4

Take the wire assembly and unscrew the bottom of the shell at the end of the wire assembly. Insert one (1) Screw into the bottom section that was just removed.

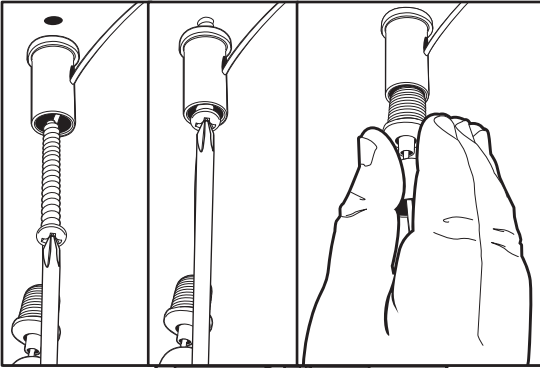


Step 5

Choose four (4) spots where you plan to insert the wire assemblies on the Waffle Cloud in order to hang it from the ceiling. Be careful to evenly space them so that the weight of the Waffle is evenly distributed and so that it doesn't sag or sway too much to any side. We suggest the four places marked in the diagram to the left.

You can use a screwdriver to insert the screws, as the panels are soft.

Note: Do not over tighten screws, causing them to strip the panel.

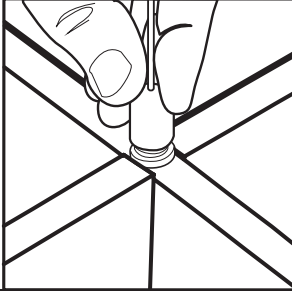


Step 6

Pick the place on your ceiling where you want to install the Waffle Cloud. Mark on your ceiling with the same spacing that the screws already are in the Waffle Cloud. You may need to drill pilot holes into the ceiling before continuing.

Note: Waffle Cloud weighs 5 lbs. Be sure the ceiling can support this weight.

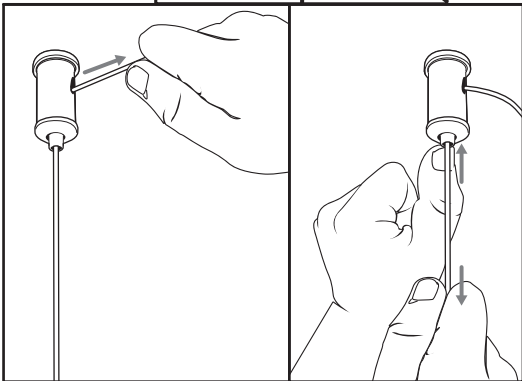
Insert a screw into the upper shell of the Wire assembly, and screw or drill into the pilot holes on the ceiling. Once attached to the ceiling, screw the middle part of the wire assembly into the upper shell, completing the wire assembly unit. Continue this for all remaining holes.



Step 7

Once all wire assembly units are screwed into the ceiling, screw the Wire assemblies lower-shell back together, connecting the Wire assemblies to the Waffle Cloud.

Have a friend hold the Waffle Cloud up, while you reattach the halves the same way you detached them in Step 4.



Step 8

To level the cloud, pull the cables from the top of the Wire assembly to tighten the slack of each Wire assembly, and raise that corner of the Waffle Cloud. Be sure to keep the weight of the Waffle Cloud supported while adjusting the wires, to avoid pulling the wire assembly from the ceiling.

If you need to lower a corner, push up on the nozzle on the top shell, and gently pull the wire down until the desired length is achieved.

When all corners are equal and the cloud is level, you can trim the excess wire or coil the slack and tie together to keep wires from dangling.

⚠ CAUTIONS & WARNINGS

- ⚠ **CAUTION:** Read all instructions before assembly. Failure to assemble properly may result in damage or personal injury.
- ⚠ **WARNING:** Ceiling must be able to support the weight of the Waffle Cloud (5 lbs) using the supplied screws. If not, use a different anchoring method (hardware not provided) or relocate Waffle Cloud to a more suitable ceiling.
- ⚠ **WARNING:** Do not hang additional objects on the Waffle Cloud, as this could cause damage to the cloud and your ceiling.