

Desktop Air Purifier

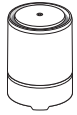
ACC061

UPLIFT DESK

Work better. Live healthier.

Package Contents

Main Unit



USB Cable



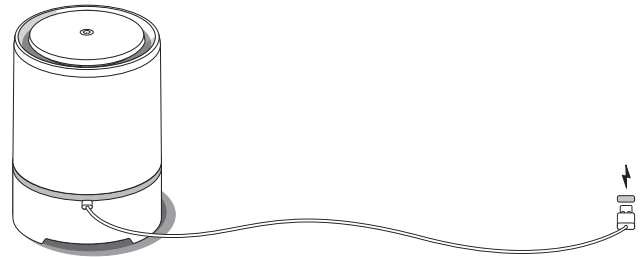
Negative Ion Cleaning Brush



Assembly Instructions

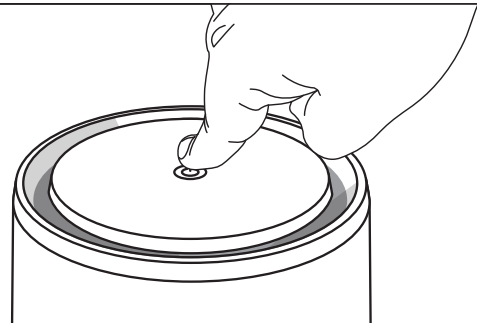
Step 1

- Plug the small end of the USB Cable into the port on the back side of the Main Unit.
- Plug the other end of the USB Cable into a 5V, Type A USB port.



Step 2

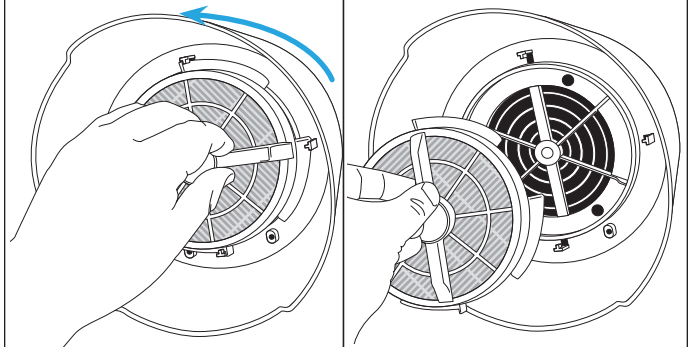
- Press the Power button (located on the top of the Unit) once to turn on the Unit and the light.
- Press the Power button a second time, and the light will dim slightly as it enters power save mode. After eight hours of use, the Unit will shut off automatically.
- Press the button a third time to shut off the Unit and the light.



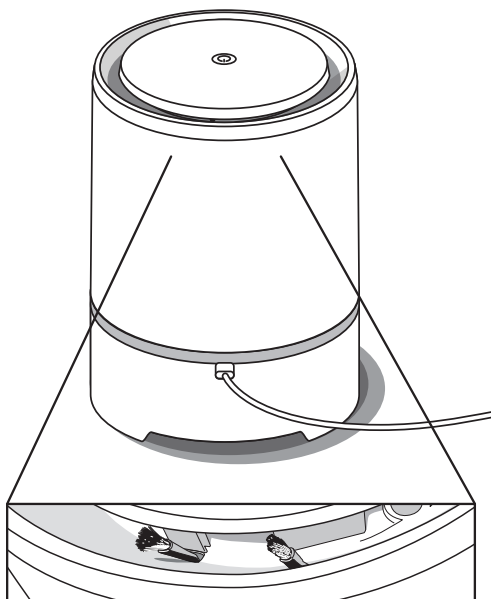
HEPA Filter Replacement

The HEPA filter is located in the bottom of the Unit and should be replaced every 2 to 6 months. Replacement filters (ACC064) can be purchased at upliftdesk.com.

- Turn the Unit off, disconnect the USB cable, and flip the Unit over to access the filter.
- Turn the filter counter-clockwise and pull it out to remove it.
- Insert a new filter and turn in clockwise to lock into place.



Troubleshooting



Negative Ion heads



Unit not functioning

Check that power is turned ON.

Check that both ends of the USB Cable are firmly plugged in.



Odor comes from the air output

The filter may be dirty. Change the filter.



Poor purifying efficiency

Unit may be located far away, in an unventilated place, or blocked by a barrier. Remove these obstacles to ensure better efficiency.



No air is coming out at all

This issue likely indicates a blockage at the Unit's inlet (bottom) or outlet (top). Clean out anything blocking these areas.



Low Negative Ion count or Abnormal noise

If too much dust or other particles gather on the Negative Ion heads, the airflow can be hindered, causing a whistling sound to emit from the device. To remedy, turn the power OFF and use the Negative Ion cleaning brush to gently dust off the Negative Ion heads inside Negative Ion heads the top of the unit.

Safety and Warnings

CAUTION: Read all instructions before assembly. Failure to assemble or operate properly may result in damage or personal injury. Retain manual for future reference.

CAUTION: Unplug and remove USB Cable before maintaining or moving the unit to avoid electric shocks.

CAUTION: Keep the Unit away from water. Do not use near water sources and do not rinse the unit with water to avoid electric shocks and damage to Unit.

CAUTION: Do not use a wet hand to insert or remove the power plug to prevent electric shocks.

CAUTION: Do not clean the unit with any type of acid-base solutions to prevent damage and electric shocks.

CAUTION: Keep away from volatile or flammable items.

CAUTION: Keep objects out of the power input port, otherwise the Unit cannot operate.

CAUTION: Do not place any objects in the air-outlet area, to prevent malfunction.

CAUTION: Keep out of the reach of small children.

Under no circumstances does the manufacturer accept warranty or liability claims for damages caused from improper use of this product. Please provide these instructions to any new user or owner of the product.

Save This Manual: Study this manual carefully. If this product is sold, please provide this manual to the buyer, installers, or support personnel operating the product.

Copyright Notice: This manual is a component of this UPLIFT Desk product. This manual is a part of the scope of delivery, even if the item is resold. This manual is also available on the UPLIFT Desk website: upliftdesk.com. This manual is subject to United States copyright law.

For assembly assistance, visit upliftdesk.com/contact, call 800-349-3839, or email support@upliftdesk.com
©2024 UPLIFT Desk®. All Rights Reserved

Scan QR code for
product webpage



AI-ACC061-1.1