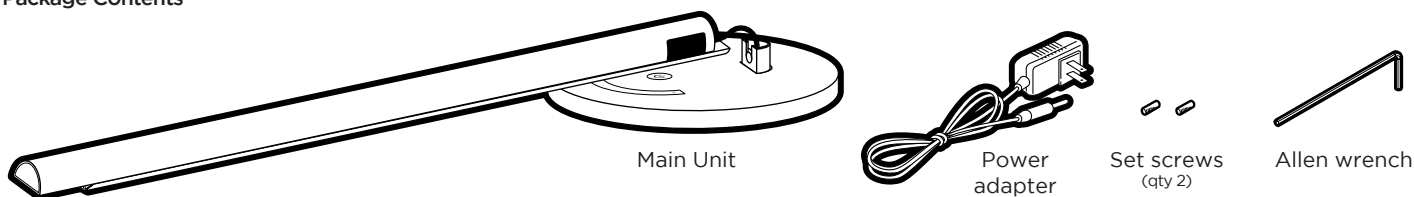


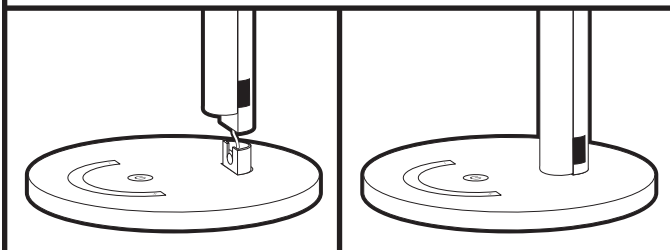
UPLIFT DESK[®] E3 LED Desk Lamp LTG004

Package Contents



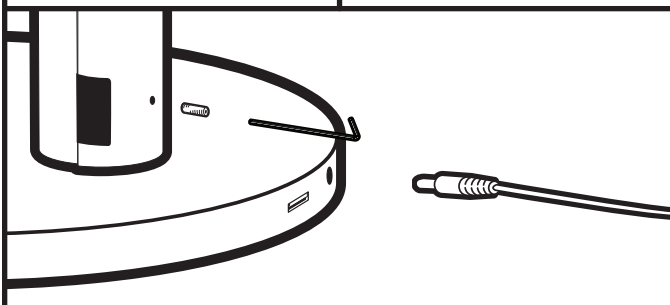
*A note before you begin:

Be careful when unpacking the lamp's Main Unit:
The base and the lamp of the Main Unit are connected by a single wire.
Hold a half in each hand, and be careful not to put strain or stress on that wire.



Step 1

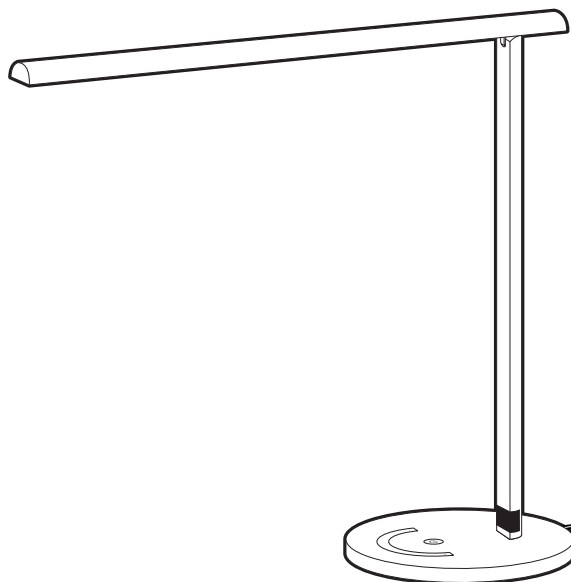
Grab the column (the long, slender portion) of the Main Unit, and fit the bottom into the slot, as pictured. Slide it in place until it stops.



Step 2

Insert one (1) Set screw into the hole near the base. While holding it steady, tighten down the screw with the included Allen wrench.

Now, plug the Power adapter into the port at the base of the lamp.

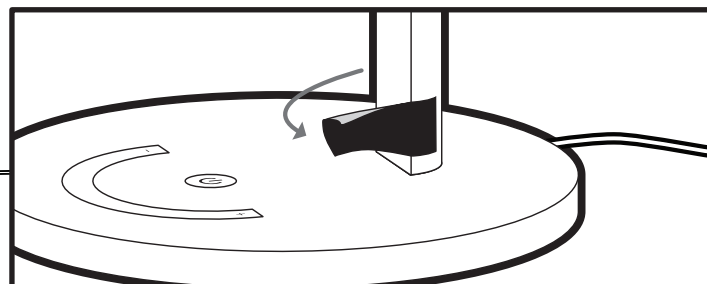


Step 3

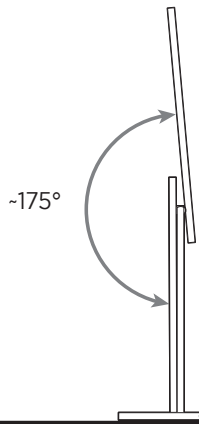
Hold the base for stability, and lift the lamp for use, and tap the power button to turn it on (see Adjustment Guide for more control features).

Warning: When opening and closing the lamp, please mind the lamp's joints to avoid clamping or pinching hands or clothing.

At this time you can remove the sticker on the base of the column. This was only included to protect the lamp during transit.

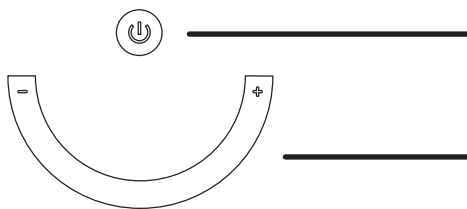


Adjustment Guide



Lamp Tilt

The Lamp can be opened about 175°, from its closed position to a (nearly) full straight-up position.



Changing Temperature & Brightness

Temperature: Press and hold the power button to shift between cool and warm light. Hold for approximately one second to toggle the light between color temperatures.

Brightness: Either tap or run your finger along the arc on the base. Move toward “+” to brighten the light, and move toward “-” to darken it.

⚠ CAUTIONS & WARNINGS

- ⚠ **CAUTION:** Read all instructions before assembly. Failure to assemble or operate properly may result in damage or personal injury. Retain manual for future reference.
- ⚠ **WARNING:** To avoid electric shock, do not attempt to disassemble the light.
- ⚠ **CAUTION:** The included Power Adapter is designed exclusively for this product. Do not attempt to use any other adapter.
- ⚠ **CAUTION:** Avoid using the light in very high temperatures or very high humidity.
- ⚠ **WARNING:** Do not look directly into the LED light source.
- ⚠ **CAUTION:** Do not use outdoors.
- ⚠ **WARNING:** Never use in a wet environment. Never allow liquid of any kind to spill onto or enter any part of the product.
- ⚠ **WARNING:** To remove powered devices, safely grasp device plug and pull straight from powered outlet. Do not pull on device cord or remove plug from any angle other than straight from outlet. Never touch metal conductors on plug during connecting or removal from product.
- ⚠ **CAUTION:** Route power cord so it won't be stepped on, pinched, have items placed on it, or in any place where it could be a tripping hazard. Never allow the power cord to sit in liquid or get wet in any manner.
- ⚠ **WARNING:** Disconnect the Power Adapter and discontinue use in the event that the following occurs:
 - The Power Adapter or cord breaks
 - The outer shell, or one or more of the joints break
 - The light emits sparks or smoke
 - Abnormal flickering occurs or any LED lights break
- ⚠ **CAUTION:** Do not try to adjust the movable components beyond their adjustment range, to avoid damage to the shell or joints.
- ⚠ **CAUTION:** If using light on an adjustable height work surface, raise work surface to maximum height before positioning fixture to ensure that cord will reach the outlet when work surface is raised.