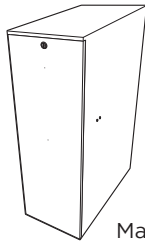


# UPLIFT DESK® Slide Out Office Storage Cabinet STR012

## Package Contents



Main Unit



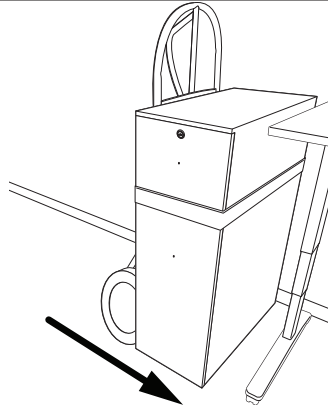
Handle



Screws  
(qty 2)



Keys  
(qty 2)

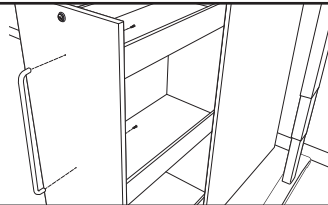


### Step 1

Move the Main Unit near the spot where you plan to situate it. Due to the cabinet's weight, we recommend using a dolly with a strap to move the Main Unit.

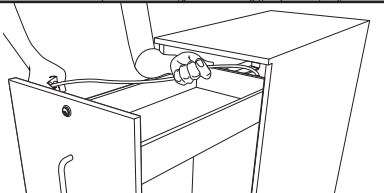
If you don't have a dolly, you will need the help of a friend to move it safely. Exercise caution when moving the unit and wear closed toe shoes.

**Note:** If you plan to feed wires through the grommet hole on the back of the unit, temporarily place the unit about a foot away from the wall so you can access the grommet hole.



### Step 2

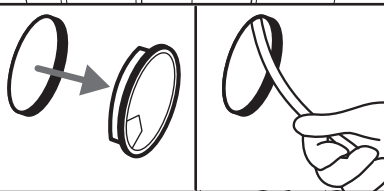
Pull the drawer open and line up the ends of the Handles on the outside with the corresponding holes on the drawer. Insert two (2) Screws into the holes inside the drawer and tighten them down to attach the Handle to the Main Unit.



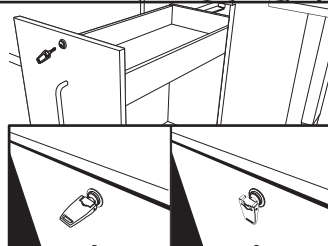
### Step 3

If you have wires to run through the grommet, keep the drawer open and feed wire(s) from the top of the open cabinet and lower them down to the grommet hole. Remove the grommet cover and reach through the hole, then grasp the wires and pull them out. Feed the grommet cover over the wires and put the cover back in place.

**Note:** Make sure wires have enough slack to reach the wall outlet and to travel with the cabinet as it opens and closes. If wires are too short, they can pull and displace devices plugged in within the cabinet or yank the outlet from the wall.



Once your wires are threaded, strap the Main Unit to the dolly or get a friend to help move it back to where you want it to finally be.



### Step 4

To lock the cabinet, simply insert the Key and rotate it 90° counterclockwise. To unlock, turn the Key 90° clockwise, or in the opposite direction.

To avoid losing your Key, leave it in the lock. You can flip the tab down so it doesn't get snagged or your clothes or personal items.

## ⚠ CAUTIONS & WARNINGS

- ⚠ **CAUTION:** Read all instructions before assembly. Failure to assemble properly may result in damage or personal injury.
- ⚠ **WARNING:** Slide-Out Storage Cabinet is 130 lbs. Use caution when moving and wear shoes. Have a friend help you move so you do not overexert or injure yourself.

© Copyright Notice: These instructions are a component of the 3D Wave Acoustic Panel. These instructions are part of the scope of delivery, even if the item is resold. These instructions are also available on the UPLIFT Desk website: [upliftdesk.com](http://upliftdesk.com). Excerpts or copies may not be forwarded to third parties or used in any other published form without the prior written consent of UPLIFT Desk. These instructions are subject to United States copyright law.