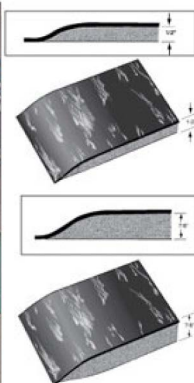


Doctor Stand-Eze™ Anti-Fatigue Mats



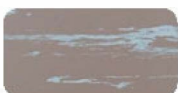
Blue

Brown

Tan

Charcoal

Solid Black



Black/White

Gray

Sandalwood



- An Anti-Fatigue Mat with attractive smooth marbled surface and non-porous encapsulated construction that cleans up easily with most disinfecting agents, meeting the challenge of laboratory and medical environments.
- Doctor Stand-Eze is ergonomically designed to stimulate blood flow and prevent fatigue. It displays excellent physical properties such as tensile strength, tear resistance and clean ability.
- Doctor Stand-Eze Anti-Fatigue mats are available in two styles. The single sponge style is 1/2" thick and the double sponge is a full 7/8" thick, double the thickness of ordinary mats. The base is sealed in a non-porous envelope that is permanently bonded to the backside.
- Three year unconditional, non-prorated warranty insures against cracking or fracturing.

Catalog
Page
19

Doctor Stand-Eze

For 7/8 Mats add "DS" to Stock Number

Stock #	Size	Weight Ea.	Price 1/2"	Weight Ea.	Price 7/8"
DS-2436	2' x 3'	9.0 lbs.	\$ 73.00	12.0 lbs.	\$ 89.00
DS-3648	3' x 4'	18.0 lbs.	\$145.00	24.0 lbs.	\$178.50
DS-3660	3' x 5'	22.0 lbs.	\$181.00	30.0 lbs.	\$224.00

Custom Sizes - Available in Lengths up to 20 Lin.Ft.

Stock #	Size	Wt. Lin.Ft. 1/2"	Lin.Ft. 1/2"	Wt. Lin.Ft. 7/8"	Lin.Ft. 7/8"
DS-36	36"	4.2 lbs.	\$38.00	4.8 lbs.	\$ 50.40

7/8 Thick / Double Sponge (DS)



www.thehumansolution.com
info@thehumansolution.com
800.531.3746