

Tile-Top Matting

In laboratories, pharmacies and medical environments, the Tile-Top look reigns supreme for ergonomic matting. The marbled appearance of these matting products is consistent with flooring commonly used in these environments. Plus, the smooth surface is desirable in applications where cleanliness is a very high priority.

However, beyond the general appearance of these products, there are many differences in construction and materials that are used in these mats that can be critically important in deciding what product is best. Not all Tile-Top mats are created equally!

First, there are different top surface options. **Wearwell offers three distinctly different surfaces:**

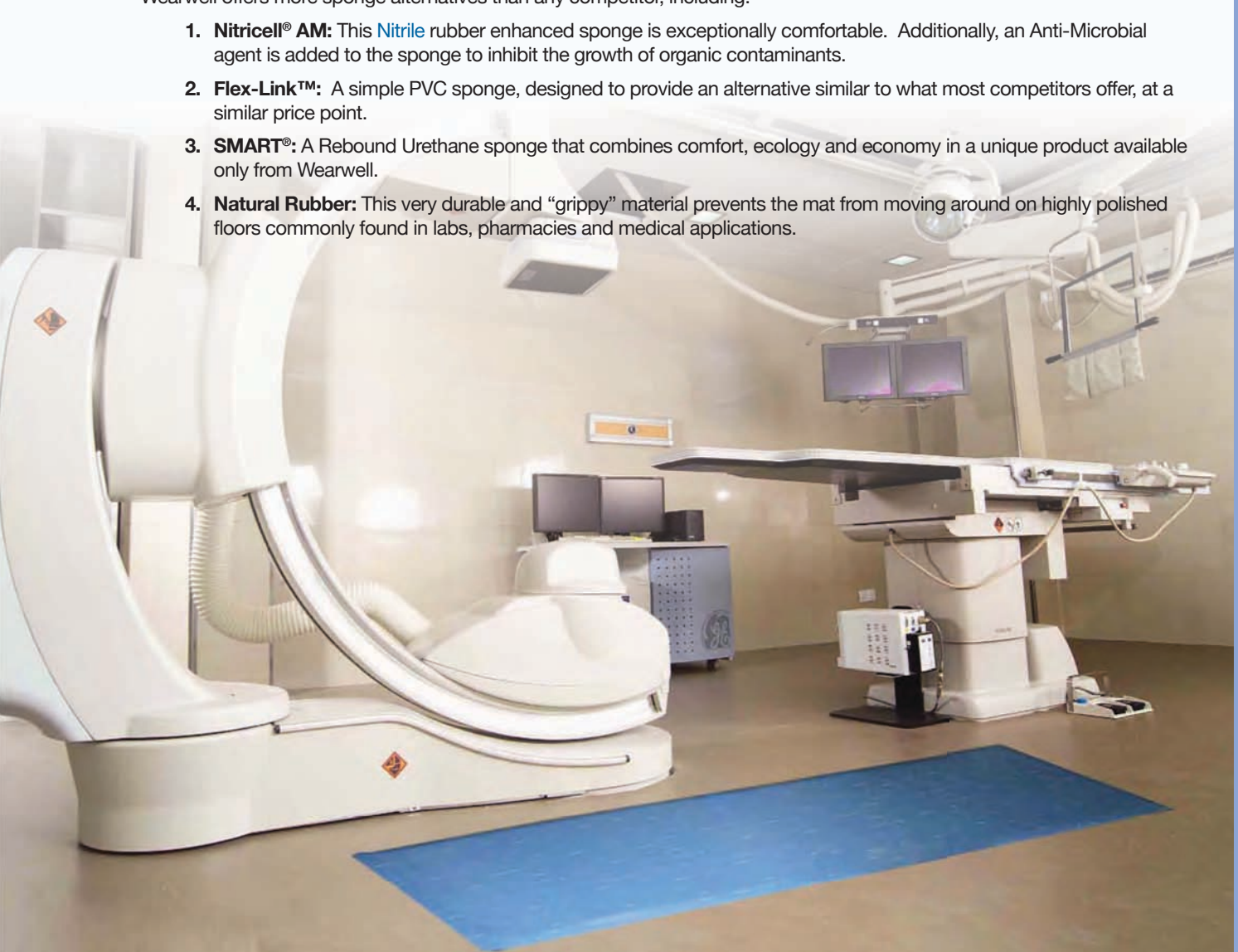
1. **AM:** An **Anti-Microbial** wear layer is added to a PVC surface to increase durability and reduce the possibility of organic contamination
2. **PVC:** A PVC surface that is easy to clean and relatively economical.
3. **Rubber:** SBR rubber which provides a great combination of durability and chemical resistance.

Beneath these surfaces lies the second essential element of the mat – the sponge. The properties of the sponge dictate how the mat will perform in critical criteria such as:

- Overall Comfort
- Longevity In Application
- Ability To Customize
- Mat Movement On Polished Floors
- Contribution To Green Initiatives
- Price Of The Mat

Wearwell offers more sponge alternatives than any competitor, including:

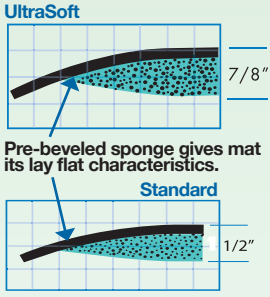
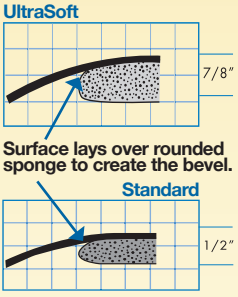
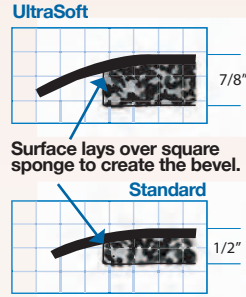



1. **Nitricell® AM:** This **Nitrile** rubber enhanced sponge is exceptionally comfortable. Additionally, an Anti-Microbial agent is added to the sponge to inhibit the growth of organic contaminants.
2. **Flex-Link™:** A simple PVC sponge, designed to provide an alternative similar to what most competitors offer, at a similar price point.
3. **SMART®:** A Rebound Urethane sponge that combines comfort, ecology and economy in a unique product available only from Wearwell.
4. **Natural Rubber:** This very durable and “grippy” material prevents the mat from moving around on highly polished floors commonly found in labs, pharmacies and medical applications.



BEST

BETTER

GOOD

	SPONGECOTE®	SELECT	SMART®
Products	UltraSoft Tile-Top AM No. 419AM, Tile-Top SpongeCote® AM No. 420AM	Tile-Top Select No. 494	SMART® Tile-Top No. 496
Sponge base	Nitricell®—a premium Nitrile rubber composite sponge formulated for crush-resistance and extended performance. 100% anti-microbial.	Flex-Link™—Dense, closed cell PVC sponge designed with similar performance characteristics to others on the market.	SMART®—A recycled urethane composite sponge, less durable overall, but truly designed budget or environmentally conscious operations.
Resilience	Best in its class. It continues to bounce back and provides long-term employee satisfaction.	Good resilience, good recovery.	Good rebound, proven for use in many commercial applications as a flooring system underlayment.
Standing Area	Extends to within 1" of the edge of the mat providing more standing room.	The sponge extends to within 2" of each edge.	The sponge extends to within 2" of each edge.
Bevel	Sponge offers built-in trip prevention bevel on standard sizes.	Sponge features rounded corners on stock sizes.	Sponge edges are not beveled.
Warranty	4 years	3 years	1 year
Thicknesses	Available in two thicknesses. 	Available in two thicknesses. 	Available in two thicknesses. 
Customization, Application and GREEN Rating			

TESTING DATA

Flammability (surface)	MVSS 302: "A" Rating	MVSS 302: "A" Rating	MVSS 302: "A" Rating
Flammability (sponge)	MIL-P12420C Burned for < 5 seconds	MIL-P12420C Burned for 5 seconds	No data
Coefficient of Friction	No. 419: Dry: .78 No. 420: Dry: .79	ASTM F1677: Dry: .79	ASTM F1677: Dry: .79
Anti-Microbial	ASTM G21-96 (2002) Passes	ASTM G21-96 (2002) Passes	No data
Tabor Abrasion	1000g, CS-17 wheel, 1000 revs .025g lost (-.1%)	Federal Standard 191 < 1% lost @ 1000 cycles	1000g, CS-17 wheel, 1000 revs .025g lost (-.4%)



BEST

UltraSoft Tile-Top AM No. 419 and Tile-Top AM No. 420

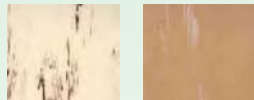
Anti-Microbial (AM) top to bottom. The **AM Nitrile** rubber composite sponge offers maximum comfort and resilience while the AM surface delivers additional abrasion and chemical resistance.



Black (BK) Gray (GY) Charcoal (CH)



Blue (BL) Brown (BN)* Tan (TN)*



White (WH)* Sandalwood (SA)*

*Available for No. 420 only.

STOCK ITEMS		
No. 419 - 7/8"	No. 420 - 1/2"	
Part Number	Part Number	Size
419.78x2x3	420.12x2x3	2' x 3'
419.78x3x5	420.12x3x5	3' x 5'

NON-STOCK ITEMS		
No. 419 - 7/8"	No. 420 - 1/2"	
Part Number	Part Number	Size
419.78x3x10	420.12x3x10	3' x 10'
419.78x2x60	420.12x2x60	2' x 60'
419.78x3x60	420.12x3x60	3' x 60'
419.78x4x60	420.12x4x60	4' x 60'

No. 419
2', 3' and 4' Cut up to 60' are available. Please specify color: Black (BK), Blue (BL), Charcoal (CH) or Gray (GY) when ordering.

No. 420
2', 3' and 4' Cut up to 60' are available. Please specify color: Black (BK), Blue (BL), Charcoal (CH), Gray (GY), Brown (BN), Sandalwood (SA), Tan (TN) or White (WH) when ordering.

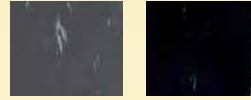
BETTER

Tile-Top Select No. 494

The chemical resistant **PVC** surface and a comfortable Flex-Link™ sponge base provides an economic and ergonomic solution.



Blue (BL) Gray (GY)



Charcoal (CH) Black (BK)

STOCK ITEMS		
7/8" Thick	1/2" Thick	
Part Number	Part Number	Size
494.78x2x3	494.12x2x3	2' x 3'
494.78x3x5	494.12x3x5	3' x 5'

NON-STOCK ITEMS		
7/8" Thick	1/2" Thick	
Part Number	Part Number	Size
494.78x2x60	494.12x2x60	2' x 60'
494.78x3x60	494.12x3x60	3' x 60'
494.78x4x60	494.12x4x60	4' x 60'

2', 3' and 4' Cut up to 60' are available. Specify color: Black/White (BWH), Blue (BL), Charcoal (CH) or Gray (GY).

GOOD

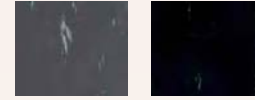
NEW!

SMART® Tile-Top No. 496

A **SMART®** solution to standing worker fatigue, this mat is economically priced, environmentally friendly and wears five times longer than common sponge based mats.



Blue (BL) Gray (GY)



Charcoal (CH) Black (BK)

STOCK ITEMS		
7/8" Thick	1/2" Thick	
Part Number	Part Number	Size
496.78x2x3	496.12x2x3	2' x 3'
496.78x3x5	496.12x3x5	3' x 5'

NON-STOCK ITEMS		
7/8" Thick	1/2" Thick	
Part Number	Part Number	Size
496.78x2x60	496.12x2x60	2' x 60'
496.78x3x60	496.12x3x60	3' x 60'
496.78x4x60	496.12x4x60	4' x 60'

2', 3' and 4' Cut up to 60' are available. Please specify color: Black (BK), Blue (BL), Charcoal (CH) or Gray (GY).