



## 920 CPU Holder

---

# Assembly Instructions

- 920-F / Fixed Mount CPU Holder
- 920-FL / Fixed Mount CPU Holder w/Lock
- 920-T / Slide & Swivel Track CPU Holder
- 920-TL / Slide & Swivel Track CPU Holder w/Lock

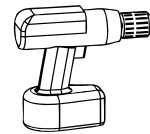
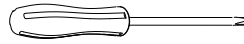
Verify that you have all the hardware and tools needed for the assembly

Check your cartons against the list below to verify that you have all the parts needed.

You will also need the following tools:

1/8" diameter drill bit

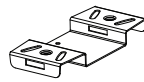
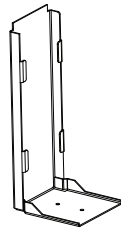
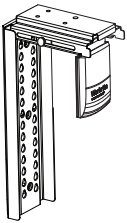
#2 tip Phillips screwdriver or drill bit



## List of Parts

### Major Components (all models)

- A** Exterior Housing Qty: 1
- B** Interior Housing Qty: 1
- C** CPU Supporting Plate Qty: 1



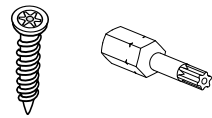
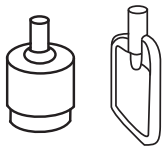
### Hardware Kit (all models)

- D** 6mm×1.0P×10mm screw Qty: 2
- E** #10×3/4" metal screw Qty: 6
- F** Star Lock Washer Qty: 2
- G** M5 ×0.8p × 6mm Screw Qty: 2

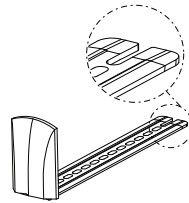
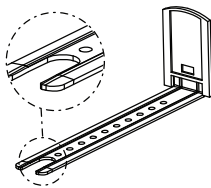


### Locking Kit (models 920-FL and 920-TL)

- H** Screwing Lock and Key Qty: 2 each
- I** #10×3/4" #25 Tamper Proof Torx Screw and Apex Drive Bit Qty: 2 screws, 1 bit
- J** M5×0.8p × 6mm Screw Qty: 1

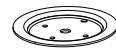
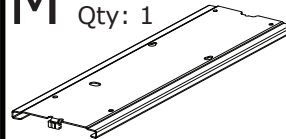


- K** Rear Locking Strip Qty: 1
- L** Front Locking Strip Qty: 1



### Track Kit (models 920-T and 920-TL)

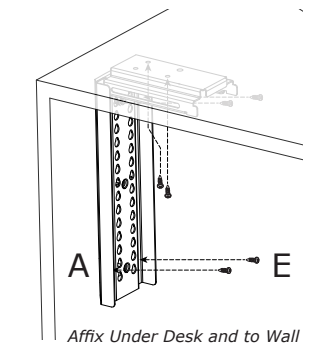
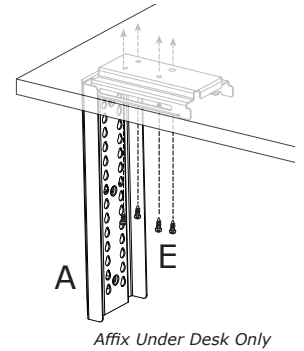
- M** Track Qty: 1
- N** Swivel Disk Qty: 1
- O** Track Glides Qty: 2
- P** Track Stop Qty: 1



Follow the instructions below specific to your product (920-F / Fixed Mount CPU Holder, 920-FL / Fixed Mount CPU Holder w/Lock, 920-T / Slide & Swivel Track mounted CPU Holder, or 920-TL / Slide & Swivel Track mounted CPU Holder w/Lock).

# 920-F / Fixed Mount CPU Holder

## 1 Affix Exterior Housing to under surface of desk and/or to wall.



Remove thumbscrew and washer, and slide CPU Clamp out. If mounting to a wall, remove plastic side cover by removing 3 Phillips screws from the interior of the Exterior Housing.

Position Exterior Housing on underside of worksurface and/or against wall. To prevent the CPU from protruding out from under the front of the worksurface, the distance from the center of the Exterior Housing to the front of the worksurface should be at least half the depth of the CPU. Mark location of screws and drill pilot holes no larger than  $\frac{1}{8}$ " , being careful not to drill through the top of the worksurface!

If securing only to underside of desk, attach with four screws as shown in top drawing.

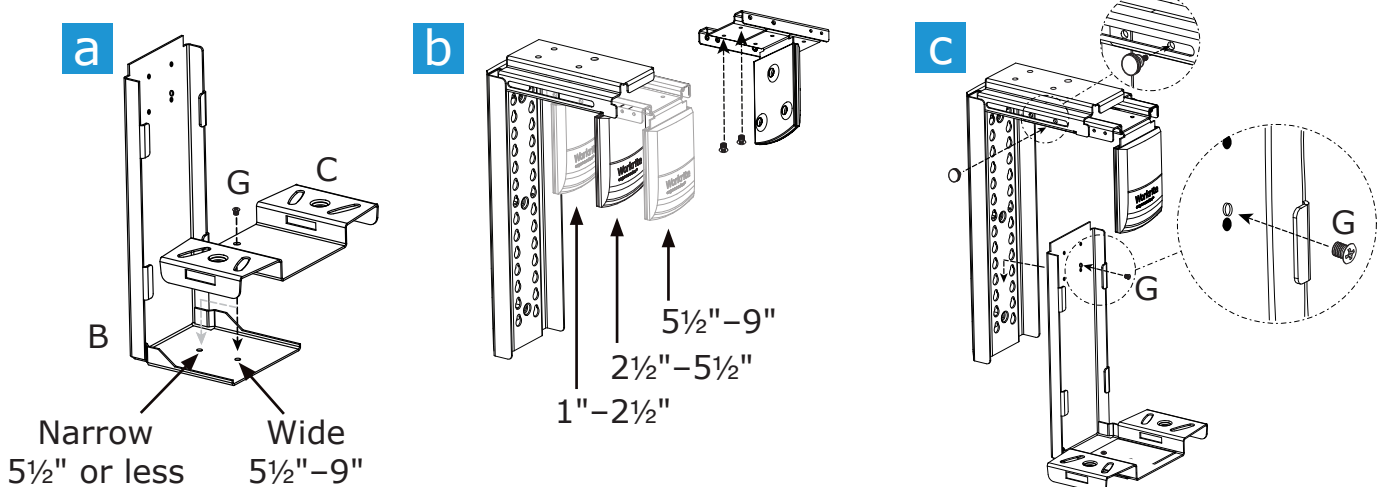
For added stability, or to mount to wall, secure exterior housing to wall or side of desk. Attach to side of desk or wall with 4 #10 $\times$  $\frac{3}{4}$  Phillips head screws (screws are intended to install into particle board or sheet metal) and optionally use 2 remaining screws to attach to underside of desk as shown in bottom drawing.

## 2 Adjust brackets for your computer size

Attach CPU Supporting Plate to Interior Housing in wide or narrow size based on CPU width. Use the narrow position if your CPU is  $5\frac{1}{2}$ " wide or less. For larger CPUs use the wide position.

Adjust the CPU Clamp if necessary. The Clamp comes assembled in the middle position and will fit CPUs from  $2\frac{1}{2}$ " wide to  $5\frac{1}{2}$ " wide. For CPUs from 1" to  $2\frac{1}{2}$ " wide, use the narrow position. For CPUs from  $5\frac{1}{2}$ " to 9" wide, use the wide position. To adjust the Clamp, remove the two Phillips head screws and move the angle bracket, then reinstall the screws.

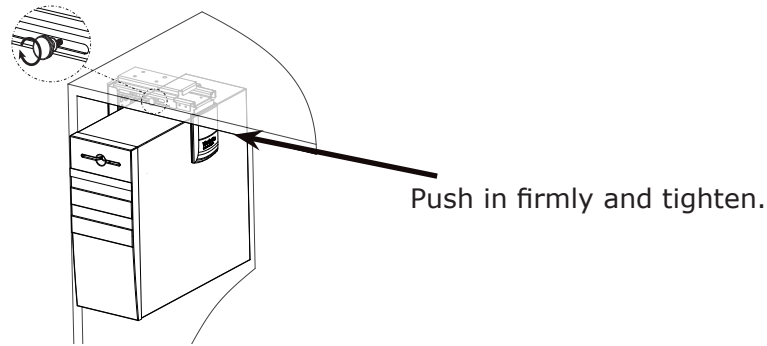
Install Interior Housing into Exterior Housing as high as possible to fit CPU and secure with M5 $\times$ 0.8p 6mm screw. Secure CPU Clamp with thumbscrew and washer as shown (for CPUs 8" to 9" wide, secure to hole left of one shown).



### 3 Insert CPU and secure top and side clamps

Place CPU onto holder. Slide top clamp firmly against the CPU to hold in place and tighten thumb screw.

Note for smaller CPUs it may be necessary to reposition the CPU clamp by removing the two Phillips head screws, moving the angle bracket inward, and reinstalling the screws. See step 2b above.



---

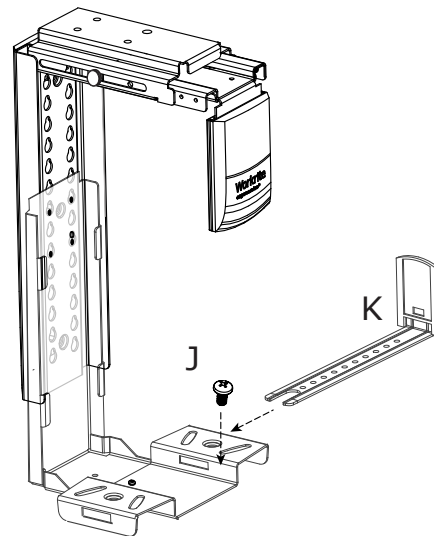
## 920-FL / Fixed Mount CPU Holder w/Lock

### 1 Attach Brackets and Adjust for computer size

Follow steps 1 and 2 above for 920-F / Fixed Mount CPU Holder.

### 2 Insert rear locking mechanism

Install the rear lower lock bar into the CPU shelf. Measure from the center of the shelf to  $\frac{1}{2}$  the depth of the CPU to the inside of the lock bar and install one M4 Phillips head screw.



### 3 Insert CPU and secure top and side clamps

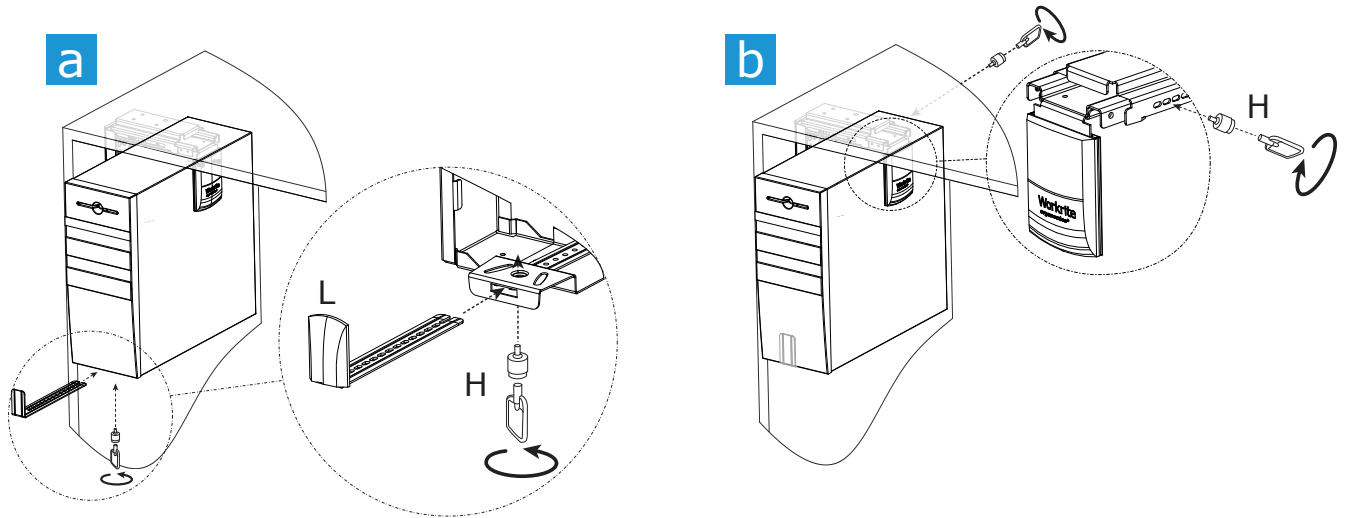
Follow step 3 above for 920-F / Fixed Mount CPU Holder.



## 4 Secure front locking mechanism

**a** Insert front locking strip and secure with locking pin and key.

**b** Secure top bracket with locking pin and key.



## 920-T / Slide & Swivel Track Mount CPU Holder

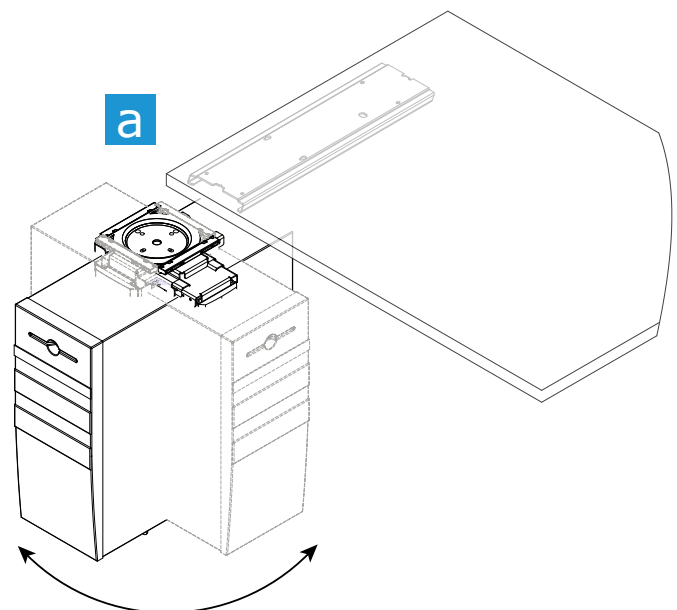
**1** Determine position of track based on clearance for swivel and mount track to desk

**a** If there is enough room to swivel the CPU for access to the back of the unit, align the track perpendicular to the front of the desk, as shown.

In tight spaces where movement would be restricted by a wall or other obstruction, align the track parallel with the front of the desk. After mounting the CPU, it can then be rotated to a perpendicular position.

The sideways mount is also recommended for Adjustable height table installations so the CPU holder cannot slide back into a position where it can be crushed between the cross bar and the top. **This is a safety concern and one of the key reasons to use a sideways track mount.**

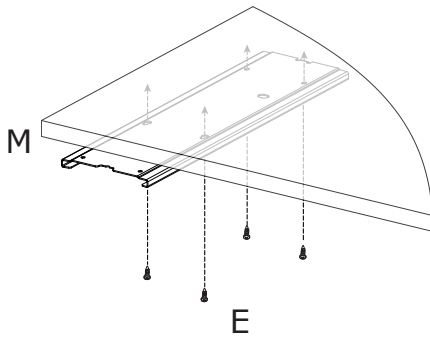
Mark location of screws and drill pilot holes no larger than 1/8" diameter, being careful not to drill through the top of the worksurface.



- b** With the track aligned so that the extended center tab is in the back (or closest to the wall), affix track to under surface of desk in parallel or perpendicular orientation using four screws. Leave the holes nearest the front of the track empty for now.

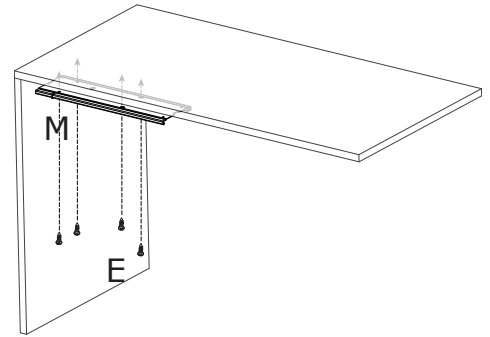
With track, under desk  
track perpendicular to desk front

In tight corners or for safety reasons, mount the track parallel to the front of the desk to allow swivel room for access to back of CPU.



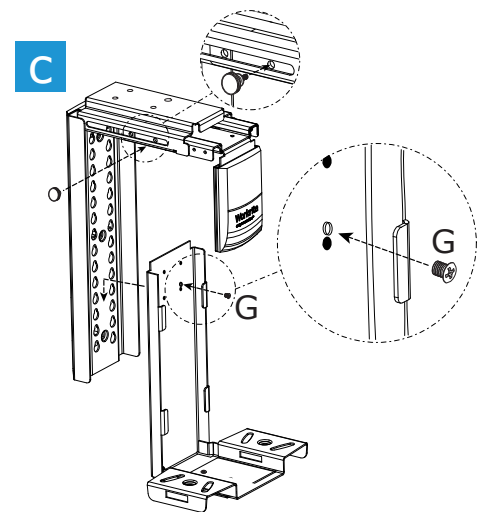
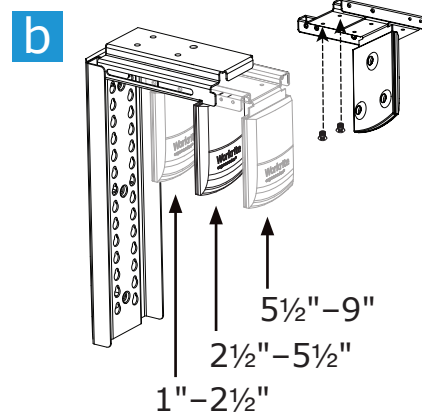
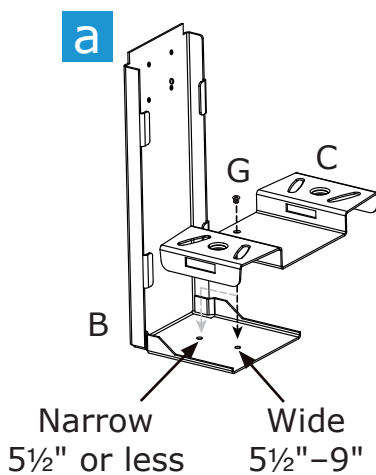
To prevent the CPU sticking out from the front of the desk after it is swiveled into position, the distance from the front edge of the track to the front edge of the desk should be at least  $\frac{1}{2}$  the depth of the CPU minus 3".

For example, for a 16" deep CPU, the front of the track edge should be at least 5" set back from the front edge of the desk ( $16/2 = 8$ ;  $8 - 3 = 5$ ).



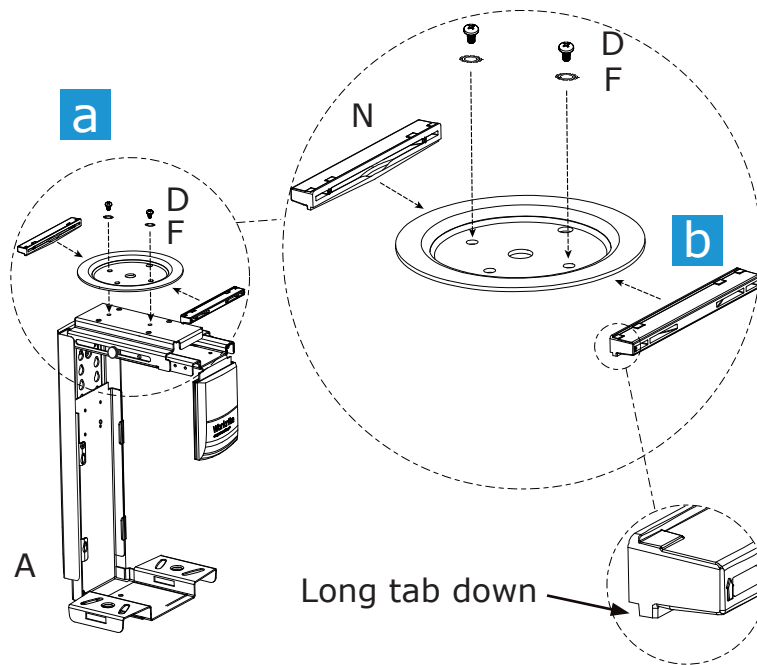
## 2 Adjust brackets for your computer size

- a** Attach CPU Supporting Plate to Interior Housing in wide or narrow size based on CPU width. Use the narrow position if your CPU is 5½" wide or less. For larger CPUs use the wide position.
- b** Adjust the CPU Clamp if necessary. The Clamp comes assembled in the middle position and should fit CPUs from 2½" wide to 5½" wide. For CPUs from 1" to 2½" wide, use the narrow position. For CPUs from 5½" to 9" wide, use the wide position. To adjust the Clamp, remove the two Phillips head screws and move the angle bracket, then reinstall the screws.
- c** Install Interior Housing into Exterior Housing as high as possible to fit CPU. Secure CPU Clamp with thumbscrew and washer as shown (for CPUs 8" to 9" wide, secure to hole left of one shown).



### 3 Assemble Swivel Disk

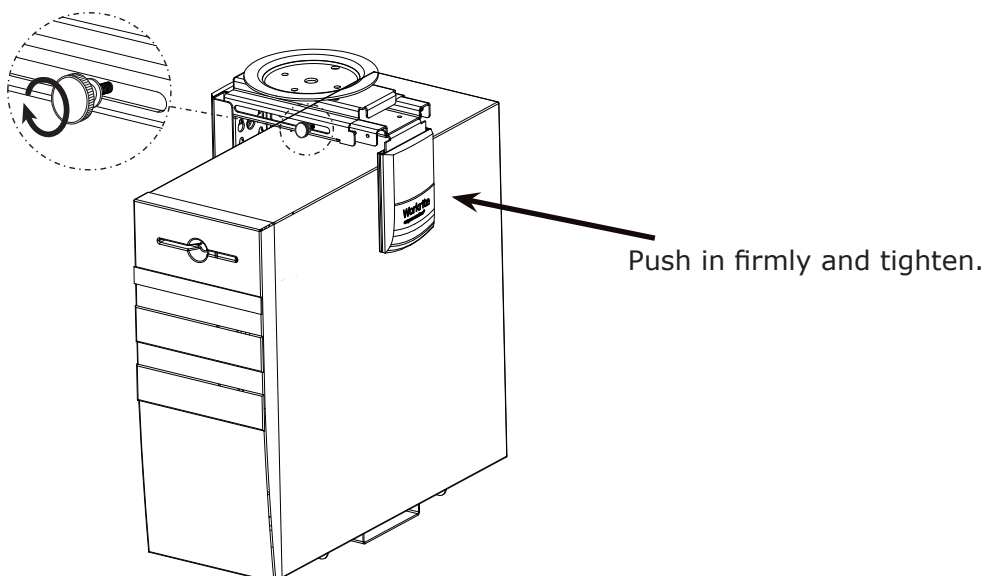
- a** Attach Swivel Disk to top of Exterior Housing with two screws and Star Lock Washers as shown.
- b** Attach glides onto Swivel Disk with the lip side (long tab) facing down toward the CPU holder.



### 4 Insert CPU and secure top and side clamps

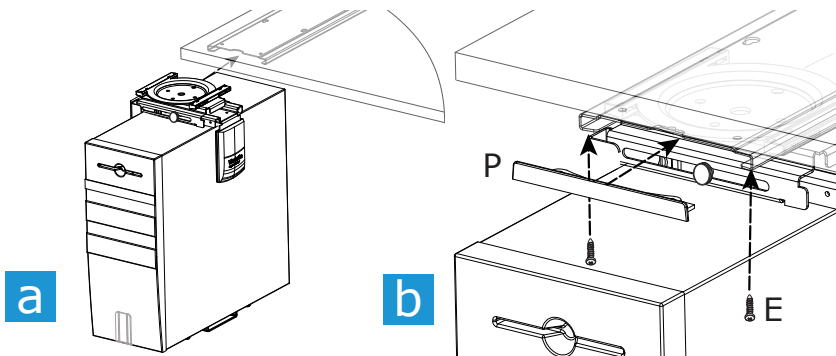
Slide top clamp firmly against the CPU holder to hold in place and tighten thumb screw.

Note for smaller CPU's it may be necessary to reposition the CPU clamp by removing the two Phillips head screws and move the angle bracket inward and reinstalling the screws. See step 2b above.



## 5 Insert CPU and Housing Into Track

- a Slide Swivel Disk into Track.
- b Attach Track Stop to front of Track using the remaining two screws.



## 920-TL / Slide & Swivel Track Mount CPU Holder w/Lock

### 1 Attach Track, adjust brackets and assemble Swivel Disk

Follow steps 1 – 3 above for 920-T / Slide & Swivel Track Mount CPU Holder on pages 5-7.

### 2 Insert rear locking mechanism

Follow step 2 above for 920-FL / Fixed Mount CPU Holder w/Lock on page 4.

### 3 Insert CPU and secure top and side clamps

Follow step 4 above for 920-T / Slide & Swivel Track Mount CPU Holder on page 7.

### 4 Secure remaining locking mechanism

Follow step 4 above for 920-FL / Fixed Mount CPU Holder w/Lock on page 5.

### 5 Insert CPU and Housing Into Track (locking version)

Follow step 5 above for 920-T / Slide & Swivel Track Mount CPU Holder on this page. Use Part I, the tamper-proof Torx tool and T25 tamper-proof Torx Screws, to secure the Track Stop instead of part E.

## Replacement Part Numbers

920-HK: Hardware Kit  
920-TK: Track Kit  
920-LK: Locking Kit